

GREENER BABY™ COMFORT RIDE™ LITE BOOSTER CAR SEAT, BOOST-AND-GO™ LITE BACKLESS BOOSTER CAR SEAT

40-100 lb (18.1-45.4 kg) and 43-57 in. (110.1-144.8 cm)

KEEP INSTRUCTIONS FOR FUTURE USE.

Read all instructions before using this booster seat.

Failure to follow the warnings on the labels and in the instruction manual can result in serious injury or death to your child.

Registration and Safety Notices

Please complete the postage-paid registration card that came with your booster seat, and send it to us. Child restraints could be recalled for safety reasons. You must register this restraint to be reached in a recall.

Send your name, address, email address if available and the restraint's model number and manufacturing date to:

Dorel Juvenile Group, Inc.
Consumer Care Department
2525 State Street
Columbus, IN 47201

or call 1-800-544-1108 or register online at www.djgusa.com/registration/car-seat/us. For recall information, call the U.S. Government's Vehicle Safety Hotline at 1-888-327-4236 (TTY: 1-800-424-9153), or go to <http://www.NHTSA.gov>.

⚠️ Booster Seat Use

Never take your child out of the booster seat while the vehicle is moving.

Never leave child unattended.

Placing your child in a hot booster seat may result in burns.

Do not use a booster seat with damaged or missing parts.

Do not substitute parts or try to modify the booster seat in any way.

Do not use any booster seat accessory except those approved by Dorel Juvenile Group.

Never allow any child to play with this booster seat; it is not a toy.

Do not remove or cover up any of the warning labels or other labels on the booster seat.

On the bottom of the booster seat there is a date of manufacture label. **DO NOT USE** this booster seat more than 10 years after the date of manufacture.

Read all instructions for additional warnings.

⚠️ Installation in Vehicle

Check the vehicle belt before each use. Use only if the belt can be tightened properly and securely.

This booster seat should be securely belted in the vehicle even when not in use. In a crash or sudden stop, an unsecured booster seat could injure occupants.

Do not use a booster seat that has been in a crash. You must get a new booster seat.

⚠️ Vehicle Seating Position

Check the vehicle owner's manual for more information about air bag/booster seat use. For vehicles without a back seat, refer to your vehicle owner's manual.



Use the booster seat only on vehicle seats that face forward.



Do not use on seats that face the sides or rear of the vehicle.

Some vehicles do not have a seating position that can be used safely with this booster seat. If you are not sure where to place

the booster seat in your vehicle, consult your vehicle owner's manual, contact Dorel Juvenile Group Consumer Care Department, or visit your local Child Passenger Inspection Station. Go to <http://www.safercar.gov/cpsApp/cps/index.htm> to find your closest station.

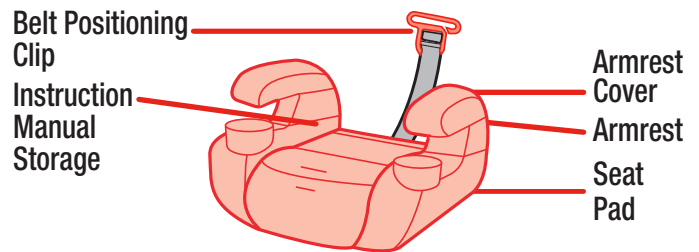


Children are safer when properly restrained in rear seating positions than in front seating positions.

According to National Highway Traffic Safety Administration information, children in rear seating positions are statistically safer, whether you have air bags, advanced air bags, or no air bags at all.

To avoid your child being seriously burned, take the following precautions:

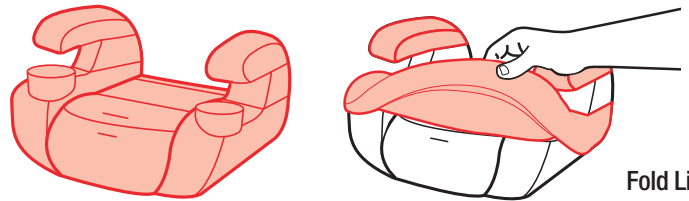
1. Park in the shade or where sun does not directly hit the booster seat.
2. Always use the booster seat with the seat pad.



*After reading the instructions and warnings, please fold and store under the seat pad in the designated storage location.

For replacement parts, please call the Consumer Care Department at 1-800-544-1108.

Removing Seat Pad for Cleaning



Starting from the front, pull armrest covers off armrests, then pull seat pad off the shell and over the armrests.

⚠️ WARNINGS: Do not use this booster seat without the seat pad. Failure to do this can result in serious injury.

Cleaning Seat Pad and Armrest Covers

Machine wash separately with cold water on a gentle cycle. Tumble dry separately for 10-12 minutes on low heat. Remove immediately. Do not use bleach or use other harsh cleaners. Do not dry clean.

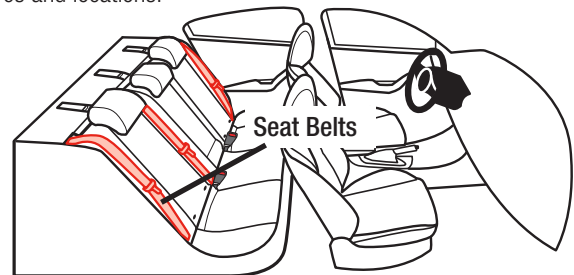
Replacing Seat Pad and Armrest Covers

Slip pad over the armrests and around the back of the shell. Pull pad over the front of the seat. Slip armrest covers over fronts of armrests and secure.

Understanding Your Vehicle

Your vehicle's features may be considerably different than those pictured here.

Consult your vehicle owner's manual to help identify your vehicle's specific features and locations.



Knowing Your Vehicle Belts

Not all vehicle belts and seating positions will work with this booster seat.

You must review your vehicle owner's manual for vehicle seat belt use with booster seats.

| Never Use With This Booster Seat | |
|---|---|
| Emergency Locking Retractor Lap Only Belt | ✗ |
| Inflatable Seat Belts | ✗ |



This restraint is not certified for aircraft use because aircraft seats do not have shoulder belts.



**40-100 lb (18.1-45.4 kg)
and 43-57 in. (110.1-144.8 cm)**



Lap/Shoulder Belt

The American Academy of Pediatrics recommends that children remain in a five-point harness until they outgrow their forward-facing harnessed child restraint.

In this car seat, your child can remain in a Booster Seat until they outgrow any one of the following:

- Weight Limit: 100 lb (45.4 kg); OR
- Height Limit: 57 in. (144.8 cm)



⚠️ WARNINGS: Do not use this booster seat if the tops of your child's ears are above the top of the vehicle seat back or headrest.

Use only the vehicle's lap and shoulder belt system when restraining the child in this booster seat.

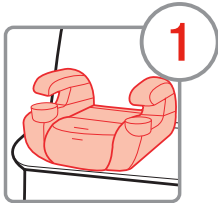


Do not use only the lap belt. The shoulder belt must always be adjusted snugly across the child's chest. **NEVER** place the shoulder belt under the child's arms.

Failure to follow these warnings can result in serious injury or death to your child.

By the nature of the design, backless booster car seats do not have a back or headrest. These types of booster car seats help position the vehicle belt across the body. Any additional protection of the body or head is dependent on the protection systems of your vehicle.

Please consider this when choosing where this booster will be used in your vehicle and always consult your vehicle owner's manual.



1

Center Booster Seat in Chosen Seating Position

The back of the booster seat should be flat against the vehicle seat back.



2

Place Child in Booster Seat

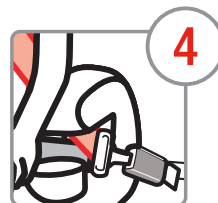
Child should sit with their back flat against the vehicle seat and bottom flat against the seat. **DO NOT** use the booster seat if your child's head is less than 5 in. (12.7 cm) below the roof of the car. Consult your vehicle manual for proper seatbelt usage.



3

Position Lap Belt on Child

Route lap portion of the lap/shoulder belt under both armrests. Lap belt should cross the child's upper thighs.



4

Buckle Lap and Shoulder Belt

The shoulder belt **MUST GO UNDER** the armrest on the vehicle buckle side. Buckle the vehicle belt.



5

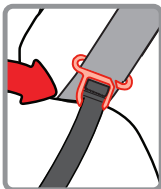
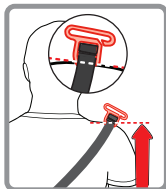
Position Shoulder Belt on Child

The shoulder belt should lay snugly across the center of the child's shoulders and across the chest (not on the face or neck).

Check periodically to ensure you child has not moved out of position and loosened the shoulder belt.



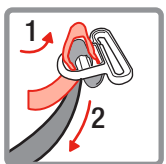
To help position the shoulder belt, you may need to secure the shoulder belt into the belt positioning clip. **NOTE:** Use the shoulder belt positioning clip only if necessary to correctly position the shoulder belt on the child. See **Belt Positioning Clip Use** section.



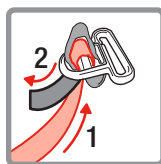
Belt Positioning Clip Use

With child in booster seat, pull the belt positioning clip across the child's back to the top of the child's shoulders.

The top of the shoulder must be even with the line in the positioning clip as shown.



To Lengthen: Push free end of the strap (1) into the clip. Pull on the opposite end of the strap (2) to remove slack as shown.



To Shorten: From the top of the clip, make a loop in the strap. Push the strap up (1) as shown. Pull free end of the strap (2) to remove the loop.

Folding the Instructions for Storage



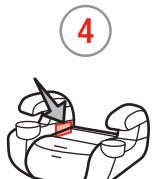
With this side of instruction sheet facing you, fold in half lengthwise.



Fold bottom up to meet fold line.



Fold top down to meet bottom.



Store inside arm.

Dorel Juvenile Group Information

Thank you for choosing this booster seat. The DJG family is committed to creating child restraints with the most comfort and convenience available today.

Remember, parents are a child's first teachers and examples. If you always buckle your seat belt, your child will think it is the natural thing to do. Make it a firm rule that the vehicle does not go until everyone is buckled up. Make no exceptions.

No one can predict if use of a child restraint will prevent injury or death in a particular crash. However, when combined with careful driving, proper use of a child restraint can lower a child's risk of injury or death in most crashes.

Your child's safety is worth the time it will take to read and follow these instructions. After reading, if you still have questions or have any concerns with this booster seat, please contact our Consumer Care

Department at:

Website: safety1st.com

Telephone: 1-800-544-1108
M-TH from 8 A.M. to 6 P.M. EST
FRI from 8 A.M. to 4:30 P.M. EST

Mailing Address:

Dorel Juvenile Group
Consumer Care Dept.
2425 State Street
Columbus, IN 47201

Warranty

Dorel Juvenile Group, Inc. (DJG) warrants this product to the original retail purchaser as follows:

This product is warranted against defective materials or workmanship for one year from the date of original purchase.

An original receipt is required to validate your warranty. DJG will, at its option, provide replacement parts or replace this product. DJG reserves the right to substitute if the

part or model has been discontinued.

To make a claim under this warranty you may contact us at www.djgusa.com, write to: Dorel Juvenile Group, Consumer Care Dept., 2425 State Street, Columbus, IN 47201, or call 1-800-544-1108 from 8:00 a.m. to 6:00 p.m. EST Monday through Thursday and from 8:00 a.m. to 4:30 p.m. on Friday. Proof of purchase is required and shipping charges are the responsibility of the consumer.

Warranty Limitations

This warranty does not include damages which arise from misuse or abuse of this product.

Limitation of Damages

The warranty and remedies as set forth are exclusive and in lieu of all others, oral or written, expressed or implied.

In no event will DJG or the dealer selling this product be liable to you for any damages,

including incidental or consequential damages, arising out of the use or inability to use this product.

Limitation of warranties and other warranty terms and state law rights

Any implied warranties, including implied warranties of the merchantability and fitness for a particular purpose, shall be limited to the duration and terms of the express written warranty. Some states do not allow limitations as to how long an implied warranty lasts or the exclusion or limitation of incidental or consequential damages, so the above limitations may not apply to you.

This warranty gives you specific legal rights, and you may have other rights, which vary from state to state. Neither DJG nor the dealer selling this product authorized any person to create for it any other warranty, obligation, or liability in connection with this product.