

# MAGELLAN XP MAX

All-in-One Car Seat



4358-7947

6.5.20



**KEEP INSTRUCTIONS FOR FUTURE USE.**

Read all instructions before using this car seat.

**WARNING** ⚠ Failure to follow the warnings on the labels and in the instruction manual can result in serious injury or death to your child.

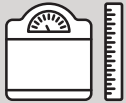


**MAXI-COSI**<sup>®</sup>  
We carry the future

## Overview

Welcome to the Maxi-Cosi family and thank you for choosing this car seat, also known as a child restraint!

To help you get started using your child's new car seat, here are the 4 main tasks you'll need to complete.



### Measure Your Child



### Adjust the Car Seat to Fit Your Child



### Install the Car Seat into Your Vehicle



### Secure Your Child in the Car Seat

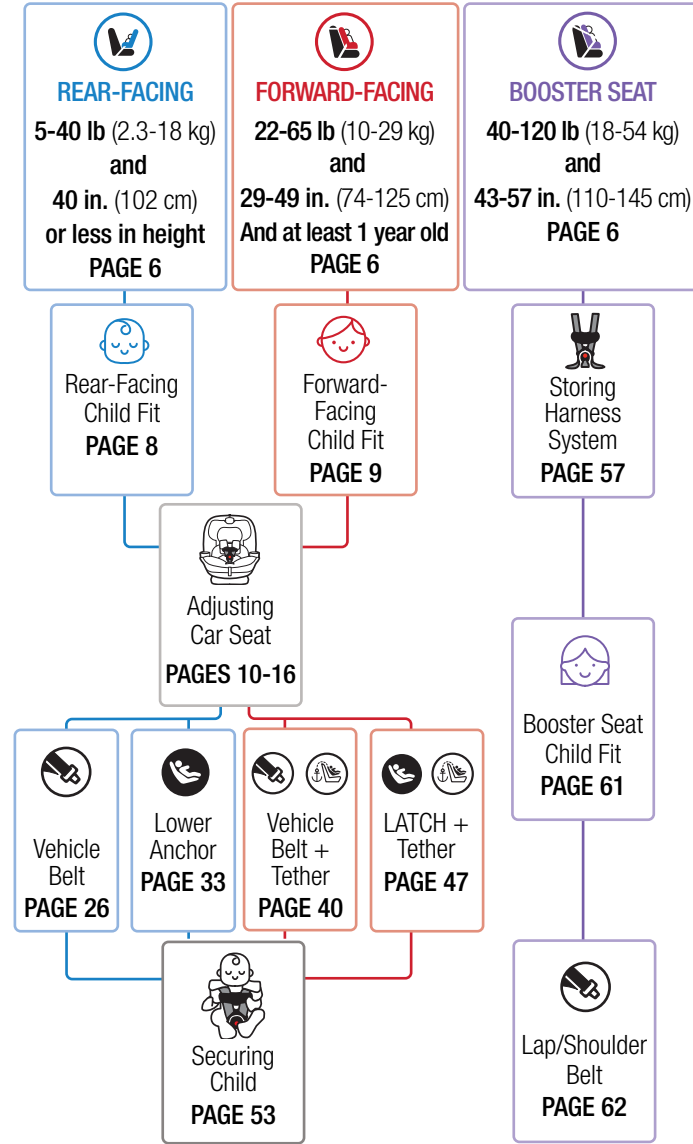
Your child's safety is worth the time it will take to read and follow these instructions.

#### Ready? Let's go!

**Pages 1-4** will introduce you to the parts of the car seat.

**Page 78** has our contact information. If at any point you would like assistance, please feel free to reach out to us.

## Quick Navigation



# Contents

## Getting Started

Parts of the Car Seat .....	1
Accessory Use .....	3
Choosing Car Seat Mode .....	5
Preparing Car Seat for Child Fit .....	7
Rear-Facing Child Fit .....	8
Forward-Facing Child Fit .....	9

## Making Adjustments to Car Seat

Changing Headrest/Harness Height .....	10
Changing Buckle Position .....	11
Changing Buckle Position for Smaller Infants .....	13
Reclining the Car Seat .....	15
Changing Torso Position .....	16

## Choosing LATCH or Vehicle Belt

LATCH: Lower Anchor Use .....	17
Vehicle Belts .....	19
Tether Use .....	23

## Installation in Vehicle

Rear-Facing Mode .....	25
Rear-Facing Vehicle Belt Install .....	26
Rear-Facing LATCH: Lower Anchor Install .....	33
Forward-Facing Mode .....	39
Forward-Facing Vehicle Belt + Tether Install .....	40
Forward-Facing LATCH: Lower Anchor + Tether Install .....	47

Securing Child in Car Seat .....	53
----------------------------------	----

## Booster Seat

Booster Seat Mode .....	56
Removing Easy-Out Harness Covers and Storing Harness System .....	57
Booster Seat Child Fit .....	61
Lap/Shoulder Belt Use .....	62

## Wash and Care of Car Seat Parts

Removing Seat Pad Set for Cleaning .....	64
Cleaning Parts of Car Seat and Installing Seat Pad Set .....	66
Installing Easy-Out Harness Covers .....	68

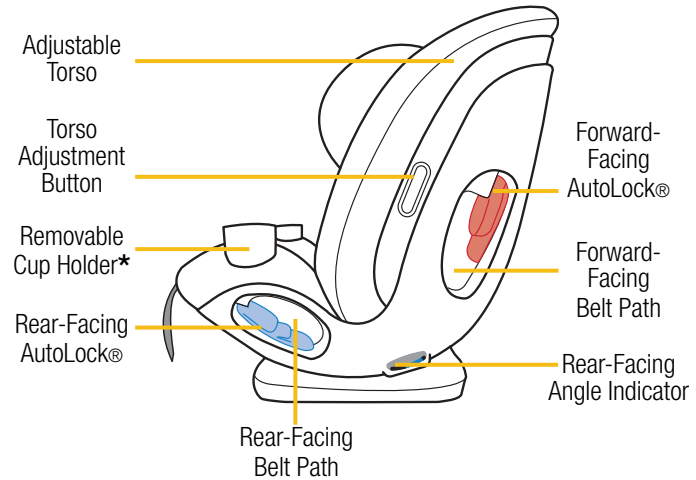
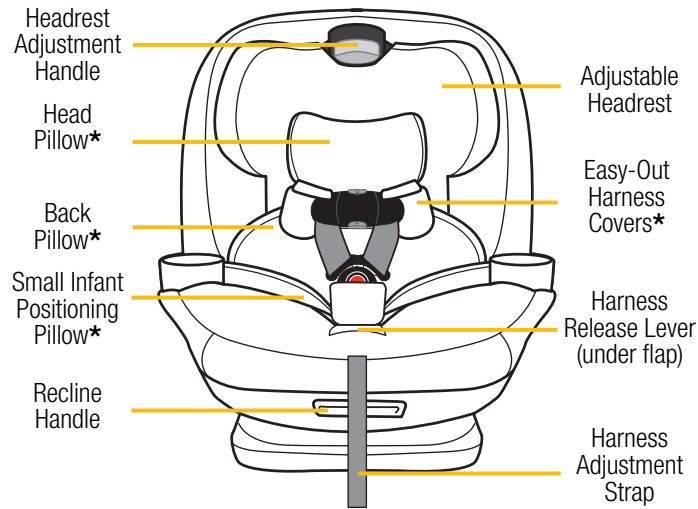
## Safety Information

Aircraft Information .....	69
Replacement and Expiration of Car Seat .....	70
Child Restraint Use .....	71
Installation in Vehicle .....	71
Vehicle Seating Position .....	72
Registration and Safety Notices .....	73

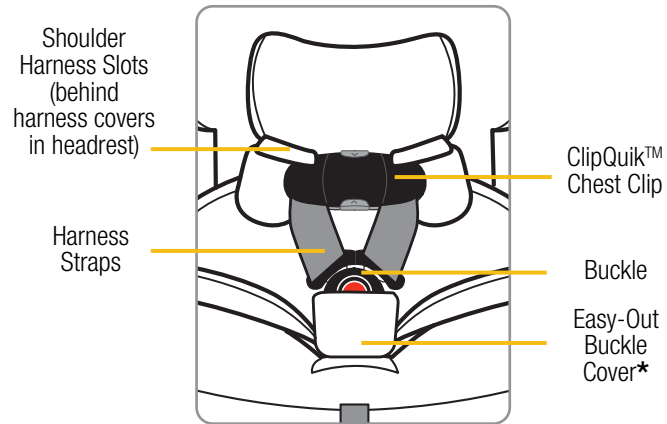
## Additional Information

Warranty .....	74
Troubleshooting .....	76
Replacement Parts List .....	77
Dorel Juvenile Group Information .....	78

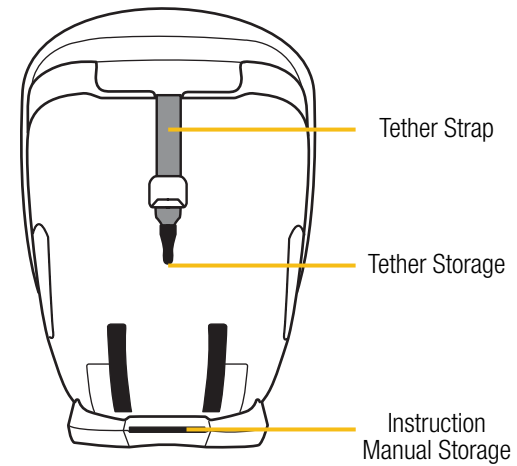
Parts of the Car Seat



Harness System Detail



\*See pages 3 & 4 for Accessory Use.



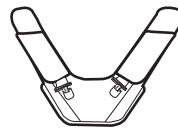
\*See pages 3 & 4 for Accessory Use.



For Use in Rear-Facing or Forward-Facing Mode



Front View



Back View

### Easy-Out Harness Covers

Harness covers help provide comfort to the neck. If the harness covers will not allow proper positioning of the chest clip or interfere with getting a tight enough harness fit for a smaller baby, remove and do not use.

Store until your child is large enough to use these harness covers while maintaining a properly fitting harness.

**To remove**, see pages 57-60.



### Easy-Out Buckle Cover

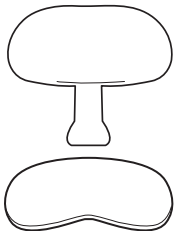
**To install**, slide buckle into opening in front of buckle cover. Then be sure to slide buckle cover itself through the buckle slot in only the seat pad.

**NOTE:** Buckle cover only goes through slot in pad and **NOT** through buckle slot in shell. It lays flat underneath the pad as shown.

**To remove**, pull up on buckle cover and slide it off of the buckle and pull it out of the buckle slot in the seat pad.



Only For Use in Rear-Facing Mode



### Head and Back Pillow

The head and back pillow must be used together.

**To remove head pillow**, pull it out from behind the back pillow.

**To remove back pillow**, loosen the harness straps and slide pillow out from behind the harness straps.



Only For Use in Rear-Facing Mode



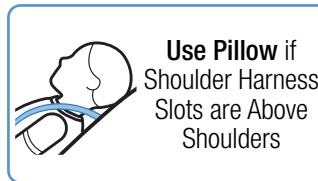
### Small Infant Positioning Pillow

When used, the small infant positioning pillow must be used with the back pillow.

This pillow helps position your infant in the seat in order to achieve proper harness fit.

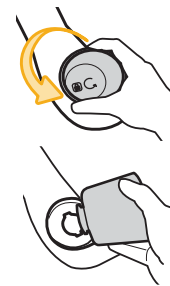
**To determine if the pillow is needed:**

1. Place headrest in lowest position.
2. Place infant in car seat without the pillow.
3. Make sure the infant's bottom and back are flat against the car seat.



Check often to see how much your infant has grown. Remove the infant pillow once they can sit in the car seat without the infant pillow and the harness slots are **at or below** their shoulders **AND** you can still achieve a snug harness fit.

**To learn how to check harness tightness**, see pages 53-55.



### Removable Cup Holders

The cup holders are top-rack dishwasher safe.

**To remove**, twist the cup holder counterclockwise. Pull it out of slot in shell.

**To install**, align tabs on bottom of cup holder with slots in shell. Twist clockwise to lock in place.

## Choosing Car Seat Mode



**Measure your child's weight and height (do not guess) before choosing the car seat's mode.**

Your child's height, weight, and age determine how the car seat should be placed in the vehicle.

Children vary widely in body size, shape, and temperament—**please consult your doctor before switching between any of these modes within the limits and fit requirements of the seat.**

### State Laws

Please be certain to follow your state's laws regarding car seat use.

### American Academy of Pediatrics Recommendations

#### Infants and Toddlers

Should ride in a rear-facing car seat as long as possible, until they reach the highest weight or height allowed by their seat.

#### Toddlers and Preschoolers

Once they are facing forward, children should use a forward-facing car seat with a harness for as long as possible, until they reach the height and weight limits for their seats.

#### School-Aged Children

Once they have outgrown their forward-facing car seat, children should use a belt-positioning booster seat until the vehicle's lap and shoulder seat belt fits properly. This is often when they have reached at least 4 feet 9 inches in height and are 8 to 12 years old.

#### Older Children

All children younger than 13 years should be restrained in the rear seats of vehicles for optimal protection.



### REAR-FACING MODE

**5-40 lb (2.3-18 kg) and 40 in. (102 cm) or less in height**

Children under 1 year of age must ride **Rear-Facing**.

**In this car seat, your child can remain Rear-Facing until they outgrow any one of the following:**

- **Weight Limit:** 40 lb (18 kg); **OR**
- **Height Limit:** 40 in. (102 cm); **OR**
- **Rear-Facing Child Fit** requirements, see page 8



### FORWARD-FACING MODE

**22-65 lb (10-29 kg) and 29-49 in. (74-125 cm)**

Children must be at least 1 year of age to ride **Forward-Facing**.

**In this car seat, your child can remain harnessed Forward-Facing until they outgrow any one of the following:**

- **Weight Limit:** 65 lb (29 kg); **OR**
- **Height Limit:** 49 in. (125 cm); **OR**
- **Forward-Facing Child Fit** requirements, see page 9



### BOOSTER SEAT MODE

**40-120 lb (18-54 kg) and 43-57 in. (110-145 cm)**

**In this car seat, your child can remain in a Booster Seat until they outgrow any one of the following:**

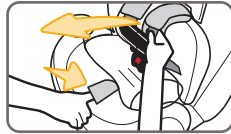
- **Weight Limit:** 120 lb (54 kg); **OR**
- **Height Limit:** 57 in. (145 cm); **OR**
- **Booster Seat Child Fit** requirements, see page 57



⚠ Do not use this chest clip with children who have an implanted electronic medical device. A magnet is used to help secure the chest clip locking mechanism together which may interfere with the proper function of an implanted electronic medical device. Parents or caregivers who have an implanted electronic device should keep their device away from the chest clip and consult their doctor and medical device manufacturer for specific information before using this chest clip. If a parent/caregiver or child has an implanted electronic medical device, please contact Dorel (see page 78) for a replacement (non-magnetic) chest clip free of charge.

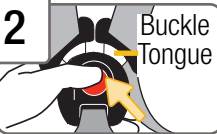


1



### Fully Loosen Harness Straps

Place your hand between the harness cover and harness strap. You may need to undo the harness cover or move the chest clip down. Push down on harness release lever (through opening in pad) while pulling out on harness straps as shown.

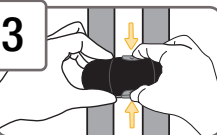


2

Buckle Tongue

### Unbuckle Harness

Press in towards the **top** of the red button to release the buckle tongues.

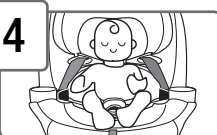


3



### Release Chest Clip

Hold the chest clip with both hands and press in on the top and bottom buttons with your index finger and thumb as shown. While holding the buttons in, pull the right (top) half of the clip apart from the left (bottom) half to release the magnet and separate the chest clip.

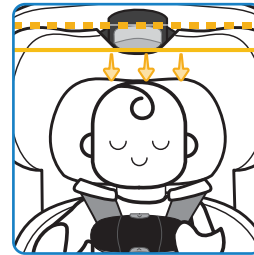


4

### Place Child in Car Seat to Determine Proper Harness Fit

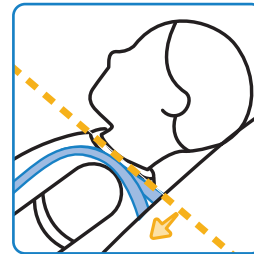
The child's bottom and back should be flat against the car seat.

For **Rear-Facing** child fit, see page 8. For **Forward-Facing** child fit, see page 9.



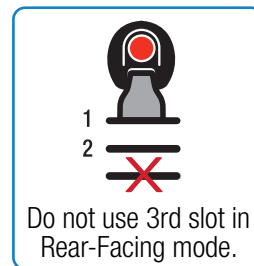
## Head Position

The top of your child's head **must be at least 1 in. (2.5 cm) below** the top of the car seat's headrest.



## Harness Strap Position

The harness strap **must be at or slightly below** the shoulders; **never above**.



## Buckle Position

Buckle must be used in either the **1st or 2nd slot**. Choose the slot closest to your child.

The buckle **should not be underneath or behind** your child.

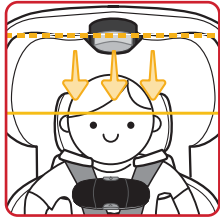
## Need to make adjustments?

To change headrest/harness height, see page 10.

To change buckle position, see pages 11-12.

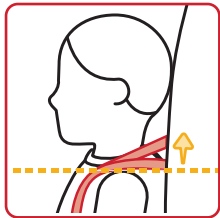


## Forward-Facing Child Fit



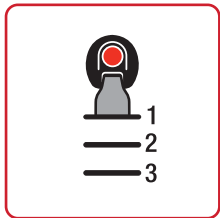
### Head Position

The tops of your child's ears **must be below** the top of the car seat's headrest.



### Harness Strap Position

The harness strap **must be at or slightly above** the shoulders; never below.



### Buckle Position

Buckle can be used in **any slot**. Choose the slot closest to your child.

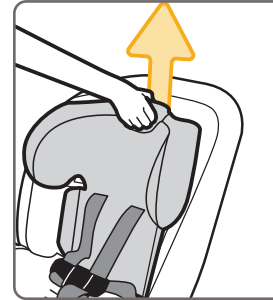
The buckle **should not be underneath or behind** your child.

### Need to make adjustments?

To change headrest/harness height, see page 10.

To change buckle position, see pages 11-12.

## Changing Headrest/ Harness Height



### Changing Headrest/ Harness Height

Squeeze the headrest adjustment handle.

Move the headrest up or down to the proper height for your child.

Release headrest adjustment handle to lock in place.

**Make sure it is locked securely.**

For **Rear-Facing Child Fit**, see page 8.

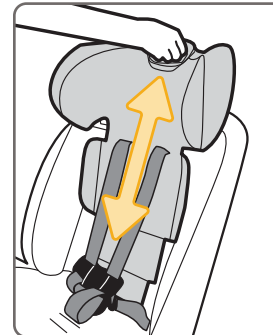
For **Forward-Facing Child Fit**, see page 9.

**Check your child's fit often.**

**If you cannot achieve a snug harness fit for your child,** see page 14.

**To learn how to check harness tightness,** see pages 53-55.

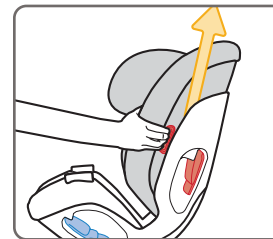
**Check the harness straps often for any wear or damage.**



### To Fully Raise the Headrest

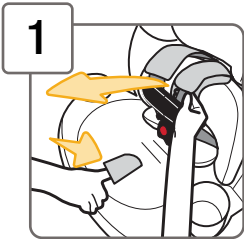
You may need to raise the adjustable torso into **Position 2** to access the highest headrest position. See page 16.

Then squeeze the headrest adjustment handle and move the headrest all the way up.



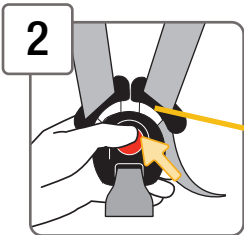
You can then adjust the torso back into **Position 1** if desired.

See page 16 and the install section you will be using for more information.



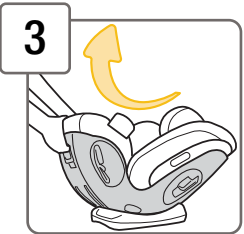
### 1 Fully Loosen Harness Straps

Place your hand between the harness cover and harness strap. You may need to undo the harness cover or move the chest clip down. Push down on harness release lever (through opening in pad) while pulling out on harness straps as shown.



### 2 Unbuckle Harness

Press in the red button to release the buckle tongues.  
Buckle Tongue



### 3 Fully Recline the Car Seat

Place one hand on the back of the car seat. With your other hand, squeeze the recline handle and rotate the car seat until it is fully reclined.



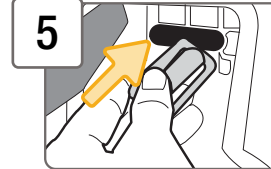
### 4 Locate the Buckle's Metal Retainer

The buckle's metal retainer is located in the opening below the recline handle.

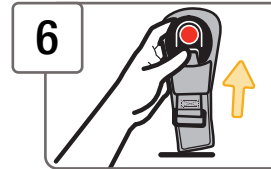
Push the harness adjustment strap to the side to fully reveal the metal retainer.



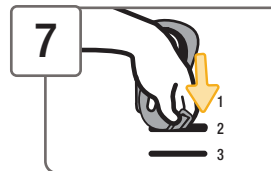
Metal Retainer



### 5 Rotate Metal Retainer and Push It Up Through Buckle Slot in Shell

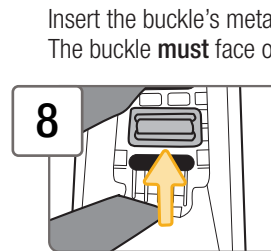


### 6 From Top of Seat, Pull Buckle and Buckle Cover Out of Shell and Pad



### 7 Slide Buckle Cover into Chosen Slot in Pad

Buckle cover only goes through slot in pad. It lays flat underneath the pad as shown.



### 8 Pull Buckle's Metal Retainer Completely Through Pad and Shell



### 9 Check Buckle

Pull up on buckle to make sure it is secured.

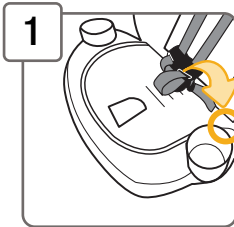
The buckle **must not** pull out.

**Check your child's fit often. If you cannot achieve a snug harness fit for your child, see page 13-14. To learn how to check harness tightness, see pages 54-56.**

**⚠ Failure to place buckle's metal retainer completely through pad and shell can result in serious injury or death.**

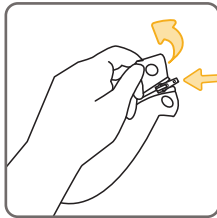
## Changing Buckle Position for Smaller Infants

If you cannot achieve a snug harness fit for your infant, make these adjustments.

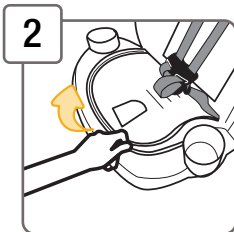


### 1 With Buckle in the 1st Slot, Locate EZ Zipper on Seat Pad As Shown

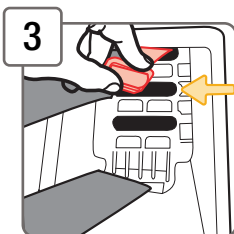
If you need to move the buckle to the 1st slot, see pages 11-12.



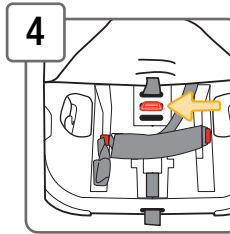
Undo the fastener to expose the zipper.



### 2 Unzip Seat Pad

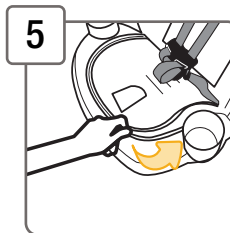


### 3 From Bottom of Seat, Pull Metal Retainer Towards You and Push It Up into the Middle Slot As Shown

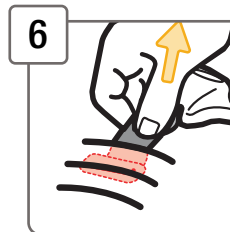


### 4 From Top of Seat, Lift Up Seat Pad Panel

Lay the metal retainer flat against the shell as shown.



### 5 Zip Seat Pad and Redo Fastener



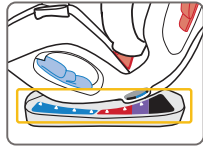
### 6 Check Buckle

Pull up on buckle to make sure it is secured.

The buckle **must not** pull out.

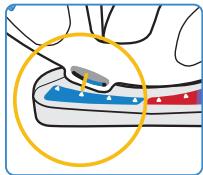
**⚠** Failure to place buckle's metal retainer completely through pad and shell can result in serious injury or death.

This car seat has multiple positions.



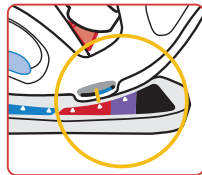
On the base, there are labels that call out the recline positions you will need to use to install this car seat in different modes.

#### Rear-Facing Mode



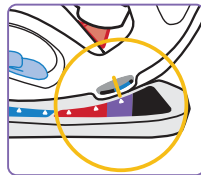
Use any **blue** position that will put the Rear-Facing Angle Indicator ball in the **blue zone**.

#### Forward-Facing Mode

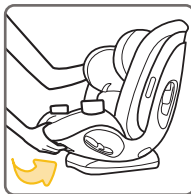


Use either **red** position that will make the back of the car seat as flush against the vehicle seat back as possible.

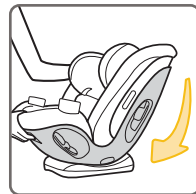
#### Booster Seat Mode



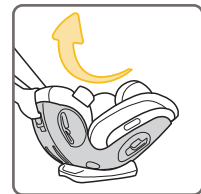
Use the fully upright **purple** position.



**To Recline:** Place one hand on the back of the car seat. With your other hand, squeeze the recline handle. The car seat will rotate in the base. Release the recline handle to lock the seat into place.



**For More Upright:** Place one hand on the back of the car seat. With your other hand, squeeze the recline handle and pull top of car seat forward. Release the recline handle to lock the seat into place.



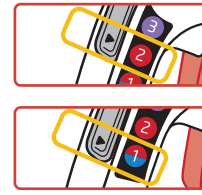
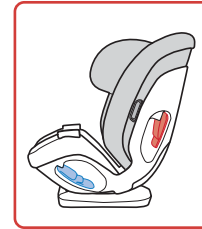
This car seat has an adjustable torso.

#### Rear-Facing Mode



Position 1

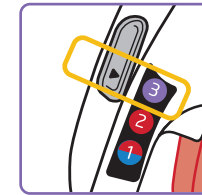
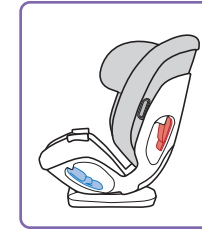
#### Forward-Facing Mode



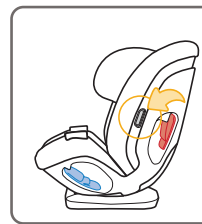
Position 1  
or Position 2

You may adjust to **Position 2** as your child grows.

#### Booster Seat Mode

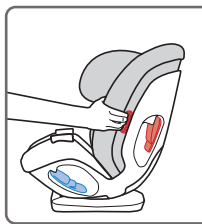


Position 3

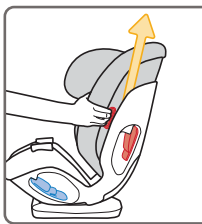


#### To Change Positions:

Push in on torso adjustment buttons on both sides of the car seat while sliding the adjustable torso up or down.

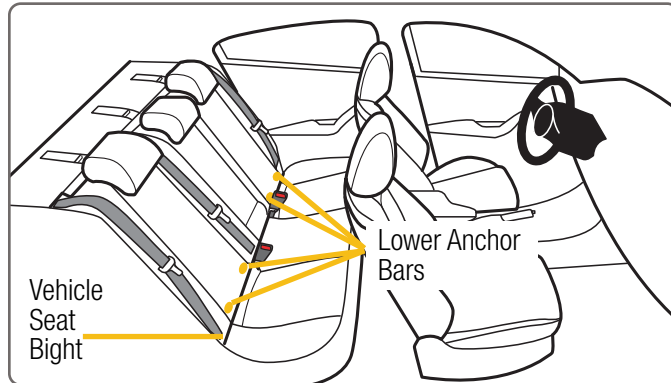


Release the buttons to lock the torso in place. Hold the sides of the torso and move it up and down to make sure it is securely locked in place.





For Use in **Rear-Facing**  
or **Forward-Facing Mode**



Your vehicle's features may be considerably different than those pictured here.

The lower anchors of LATCH (Lower Anchors and Tethers for Children) is a universal system for installing child restraints without using vehicle seat belts.

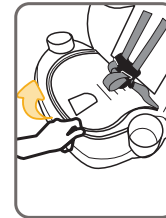
The lower anchor can **ONLY** be used in vehicles that have the lower anchor bars installed in designated seating positions. Most vehicles manufactured after September 2002 are equipped with lower anchor bars.

Check your vehicle owner's manual to see which seating positions may be equipped with LATCH: lower anchor bars.

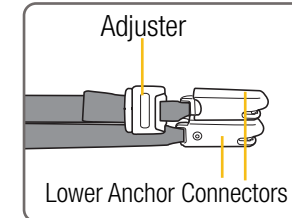
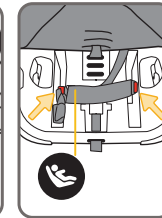


**Do not use both the lower anchor belt and vehicle belt at the same time.**

**When used correctly the lower anchor belt or vehicle belts are equally safe.**



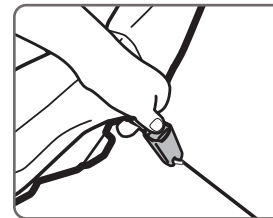
Lower Anchor Belt  
Storage Location



Lower Anchor  
Belt Parts

### To Remove Lower Anchor Belt from Storage Location on Car Seat:

1. Unzip seat pad and lift panel up.
2. Press the red release button on each connector, then pull the connectors off of storage attachments.

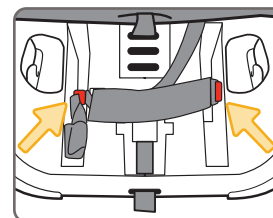


### To Remove Lower Anchor Belt from Vehicle Lower Anchor Bars

Press the red release button on each connector, then pull the connectors out of the vehicle seat bight.

### To Store Lower Anchor Belt:

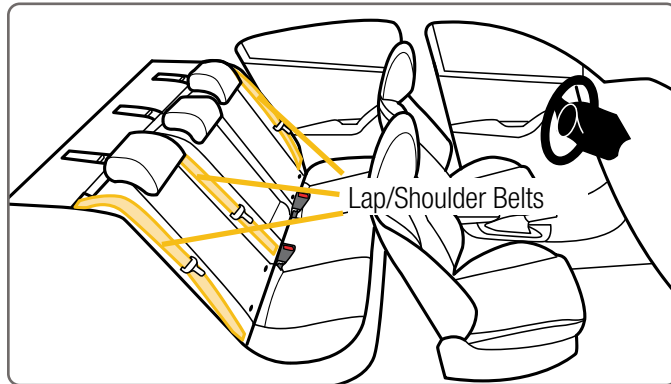
**When using vehicle belts, using the booster seat mode, or when the car seat is not installed in a vehicle, the lower anchor belt must be properly stored in its storage location.**



Lower Anchor Belt  
Storage Location

Attach the connectors to the bars in the openings in the shell as shown.

Gently tighten to remove slack.



Your vehicle's features may be considerably different than those pictured here.

If lower anchors are not an option or if your child weighs more than 35 lb (15.9 kg) for **Rear-Facing** or 40 lb (18 kg) for **Forward-Facing**, you must use the vehicle seat belt system to install the child restraint.

**Not all vehicle belts and seating positions will work with child restraints.**

**Please go through the following steps to understand how to lock a child restraint in **Rear-Facing** or **Forward-Facing** mode with a vehicle belt.**

1



### You MUST Review Your Vehicle Owner's Manual

Your vehicle owner's manual will let you know which vehicle belts and seating positions child restraints can be installed in.

2



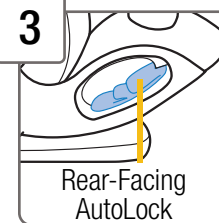
### Determine How the Child Restraint Will Be Locked Into Place

The vehicle belt **must not** loosen after tightening. This means there needs to be a way to lock the vehicle belt.

The ways this can be done are:

- By using this car seat's built-in AutoLock (see step 3); **OR**
- By using the seat belt's retractor (see step 4); **OR**
- By using the seat belt's latch plate (see step 5).

3



### The AutoLock

When used correctly, this car seat's AutoLock will lock the vehicle belt.

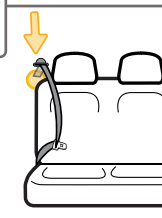
Please go to the correct vehicle belt installation section of the manual to see how to properly use this feature.

**Rear-Facing Vehicle Belt Install: page 26**

**Forward-Facing Vehicle Belt + Tether Install: page 40**

If you do not use this feature, you **must** lock the vehicle belt using the retractor or the latch plate. Continue to step 4.

4



### Check the Retractor

Retractors pull seat belts into stored positions and lock the belt to hold passengers in place.

See the next page for some common types of vehicle belt retractors that will work with this child restraint.

*continued on next page*





## Types of Retractors

### Switchable Retractor

(most vehicles have this type)



This retractor can be switched to a locking mode.

You **must have the retractor in the locking mode** to use the seat belt with this child restraint.

**Switching to locking mode:** Slowly pull the shoulder belt all the way out, then let it go back in an inch or two.

As it goes back in, you will most likely hear a ratcheting sound.

Gently pull the belt to see if it has locked. You will not be able to pull any more belt out if the lock has engaged.

### Automatic Locking Retractor



This retractor always locks.

It will automatically lock after slowly pulling the seat belt out at least halfway and letting the belt go back into the retractor an inch or two.

### Emergency Locking Retractor

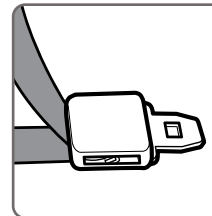
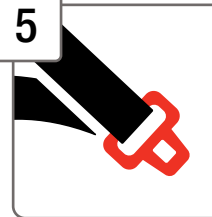
See Step 5, "Check Latch Plates."

If the retractor does not lock, it is most likely an Emergency Locking Retractor. These retractors only lock during a sudden stop or collision.

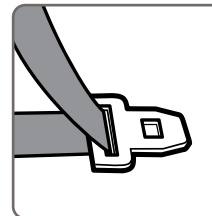
You will need to determine if your seat belt's latch plate can lock the belt. See Step 5, "Check Latch Plates".



5



Locking Latch Plate



Emergency Locking Retractor with a Sliding Latch Plate

## Check Latch Plates

Latch plates are the part of the seat belt that goes into the buckle.

### To see if the latch plate locks:

Buckle the vehicle belt.

Then firmly tug the lap portion of the seat belt while pulling it up.

If the vehicle belt does not slide through the latch plate, it's locked.

If the latch plate slides up and down the vehicle belt, it is a **sliding latch plate**.

Sliding latch plates easily slip between the lap and shoulder portions of the belt.

**If you have an Emergency Locking Retractor with a Sliding Latch Plate, you must use the car seat's AutoLock feature.**

## Never Use With This Child Restraint

Emergency Locking Retractor Lap Only Belt

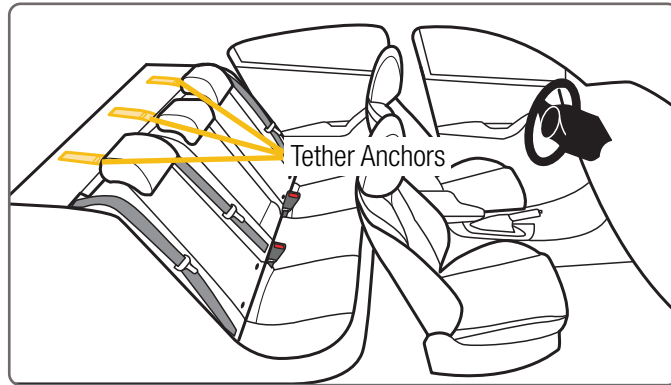


Inflatable Seat Belts





### For Forward-Facing Mode Only



Your vehicle's features may be considerably different than those pictured here.

You **must always attach, adjust, and secure the top anchorage (tether) strap** when installing the child restraint forward-facing with internal harness. Tethers improve the installation and stability of child restraints and reduce the risk of injury.

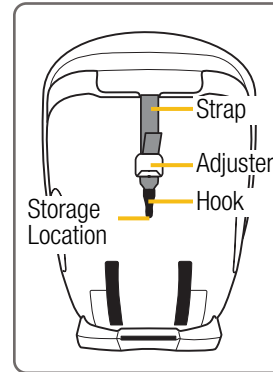
Attach the tether hook to the tether anchor designated by your vehicle manufacturer for that seating position. Check your vehicle owner's manual for more information.

If the seating position does not have a tether anchor, use a different seating position or see your dealer or a qualified mechanic and have one installed.



**Using this child restraint without the tether strap anchored as recommended by the manufacturer would be a misuse of the child restraint and, in a sudden stop or crash, could result in serious injury or death.**

**Do not fasten multiple tether hooks on the same tether anchor in the vehicle.**

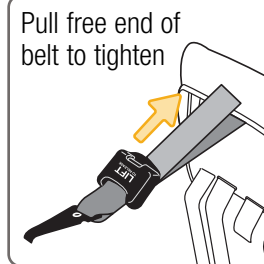


Tether Storage and Parts

### Storing Tether Strap

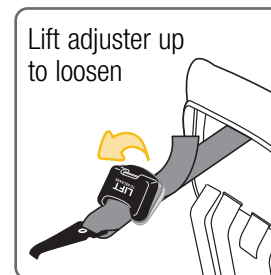
**When installing rear-facing, using the booster seat mode, or when the car seat is not installed in a vehicle,** attach the tether hook to its storage attachment on back of car seat as shown.

Gently tighten to remove slack.



### Adjusting Tether Strap

**To tighten:** After the child restraint is locked into place with the lower anchor belt or vehicle belt, push down on child restraint and gently pull on free end of tether strap.



**To loosen:** Lift up on tether adjuster and push it towards tether hook.



## Rear-Facing Mode

**5-40 lb (2.3-18 kg) and  
40 in. (102 cm) or less in height**



  
**Lap/  
Shoulder Belt**



  
**Lap  
Belt**



  
**LATCH: Lower  
Anchor Belt**

Do not install by this method  
for a child weighing more  
than 35 lbs (15.9 kg).



Never install a rear-facing child restraint in the front seat of a vehicle equipped with an active frontal airbag.



Do not use the tether for rear-facing mode. Secure tether strap to its storage location.

Do not use the lower anchors of the child restraint anchorage system (LATCH system) to attach this child restraint when restraining a child weighing more than

35 lbs (15.9 kg). The vehicle belt must be used for installation if your child weighs more than 35 lb (15.9 kg).

Do not use the lower anchor belt along with the vehicle lap or lap/shoulder belt.

Check the vehicle belt or the lower anchor belt before each use. Use only if the belt can be tightened properly and locked securely in place.

Do not fasten multiple lower anchor connectors on the same lower anchor bar in the vehicle.

This child restraint **MUST** always face the rear of the vehicle until the child is at least 1 year old and weighs 22 lb (10 kg). Failure to follow these warnings can result in serious injury or death.

## Rear-Facing Vehicle Belt Install



Before you begin installing the seat into your vehicle, did you check:



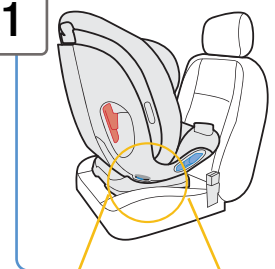
Your child's weight and height?  
See page 25.



Your child's fit? See page 8.

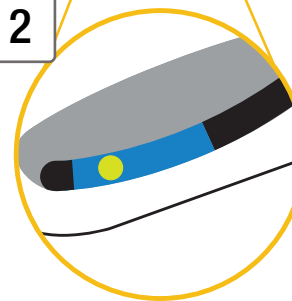
Do you need to make adjustments to the harness/headrest height or the buckle position?

1



**Place Car Seat Rear-Facing in Back Seat**

2



**Check the Rear-Facing Recline Angle Indicator**

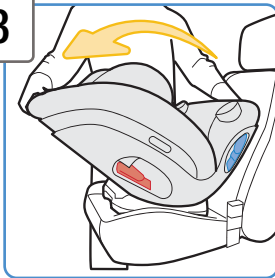
The angle indicator ball must be in the **blue zone** when used Rear-Facing.

Recline the car seat to achieve the proper angle, see step 3.

*continued on next page*

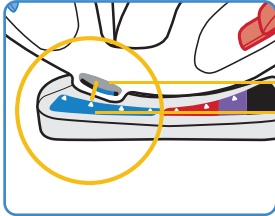


3



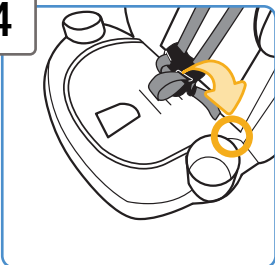
### Recline the Car Seat

Squeeze the recline handle and rotate the car seat to any **blue position** that will put the angle indicator ball in the **blue zone**.



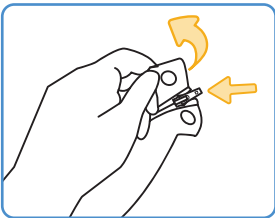
Rear-Facing Angle Indicator  
Rear-Facing Positions

4

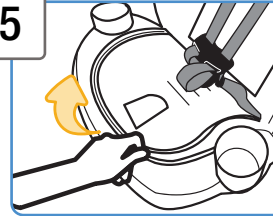


### Locate EZ Zipper on Seat Pad As Shown

Undo the fastener to expose the zipper.



5

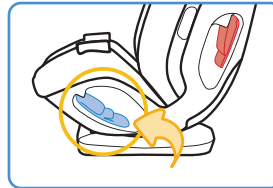
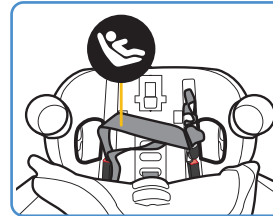


### Unzip Seat Pad

Lift the seat pad panel up to reveal the **Rear-Facing Belt Path**.

You will see the lower anchor belt. **Do not remove this belt** from its storage location.

The vehicle belt will be routed over top of it.



Rear-Facing  
AutoLock

### IMPORTANT!

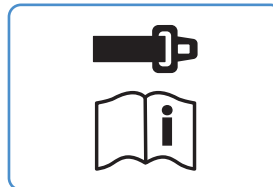
#### If you will be using the AutoLock:

Do not pull the vehicle belt all the way out to lock it **BEFORE** routing the belt.

This will make threading the shoulder belt into the AutoLock easier.

#### If you will not be using the AutoLock:

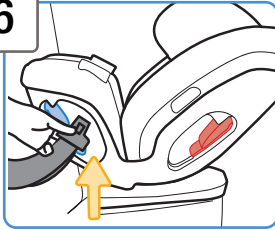
Review pages 19-22 and your vehicle owner's manual to determine what kind of vehicle belt you have and how to lock a child restraint in place.



*continued on next page*



6



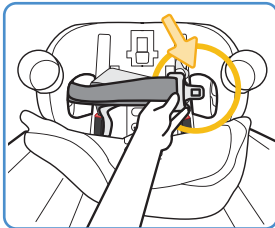
### Route the Vehicle Belt

Thread the vehicle belt into the **Rear-Facing Belt Path** opening.

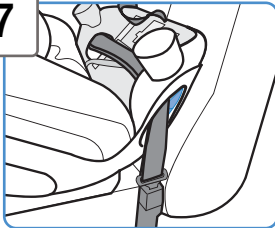
Pull it across the seat and in front of the buckle.

Then thread it out through the other belt path opening.

**Do not twist belt.**

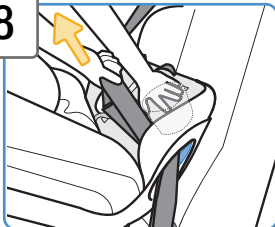


7



### Buckle the Vehicle Belt

8



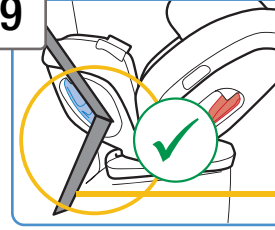
### Tighten Belt

Place hand in child restraint.

Firmly push child restraint down and towards the vehicle seat back while pulling the shoulder belt or the free end of the lap belt parallel with the belt path through the belt path opening as shown.



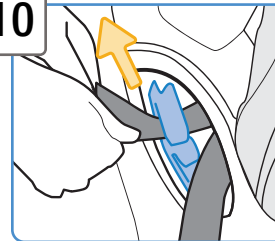
9



### Go to the Side of the Car Seat That Does Not Have the Vehicle Buckle

No Vehicle Buckle

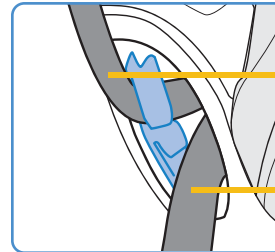
10



### Locate AutoLock

Slide only the shoulder portion of the belt up through the AutoLock as shown.

Pull it up until you cannot pull it any farther.



### Shoulder Belt

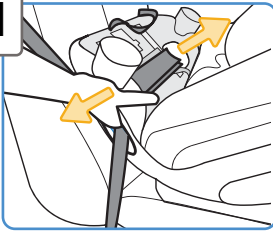
Fully threaded into AutoLock as shown.

### Lap Belt

Lays below the bottom notch as shown.



11



### Check Belt Tightness

Hold child restraint at the belt path with your weaker hand.

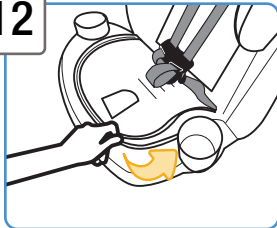
Push and pull from side to side.

It should not move more than **1 in. (2.5 cm)**.

**If it moves more than 1 in. (2.5 cm), you can try:**

- A. Reinstalling the child restraint.
- B. Changing to a different seating location.
- C. Switching to lower anchor belt installation if lower anchors are available in your vehicle.

12



### Zip Seat Pad and Attach Fastener

13



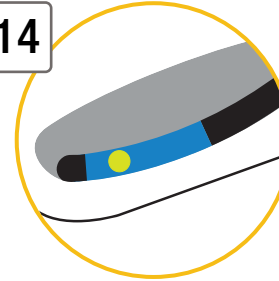
### Secure Child in Car Seat

To properly secure your child in the car seat, see pages 53-55.

Check your child's fit often and make any needed adjustments to the car seat as they grow.



14

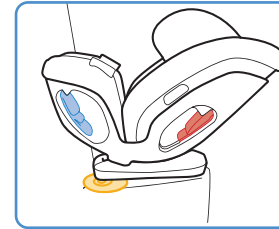


### Recheck Rear-Facing Recline Angle Indicator

Make sure the angle indicator ball is in the **blue zone**.

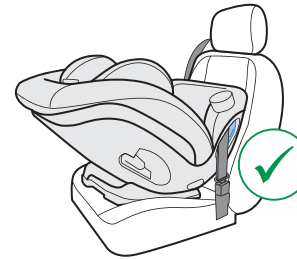
**Redo the installation if not reclined correctly.**

**NOTE:** You may need to place a tightly rolled towel(s) or foam pool noodle(s) under the front of the base to help achieve the correct recline.



Check often to be sure padding is still in place and the belt is tight.

## Finished!



When used correctly, the AutoLock will lock the vehicle belt in place.

After the seat has been installed, if your car has a switchable retractor, you may also use it to lock the belt.

Review pages 19-22 and your vehicle owner's manual to determine how to lock the belt with the retractor.

Check the tightness of the install often to make sure it has not loosened.



## Rear-Facing LATCH: Lower Anchor Install

Do not use the lower anchors of the child restraint anchorage system (LATCH system) to attach this child restraint when restraining a child weighing more than 35 lbs (15.9 kg).

Before you begin installing the seat into your vehicle, did you check:

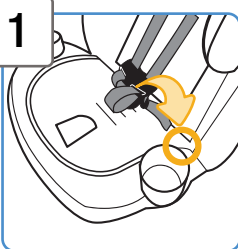


Your child's weight and height?  
See page 25.



Your child's fit? See page 8.  
Do you need to make adjustments to the harness/headrest height or the buckle position?

**IMPORTANT!** Do not use the AutoLock feature when installing with lower anchor belts.

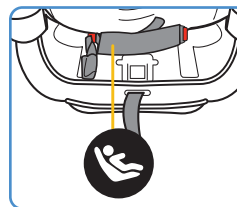
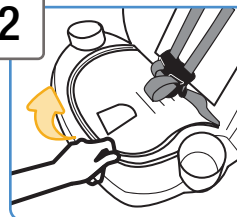


**1** Locate EZ Zipper on Seat Pad As Shown

Undo the fastener to expose the zipper.



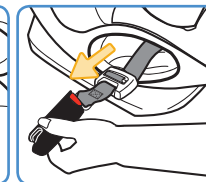
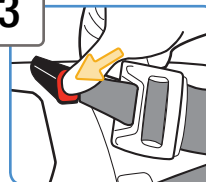
**2**



### Unzip Seat Pad

Lift the seat pad panel up to reveal the **Rear-Facing Belt Path** and the lower anchor belt.

**3**

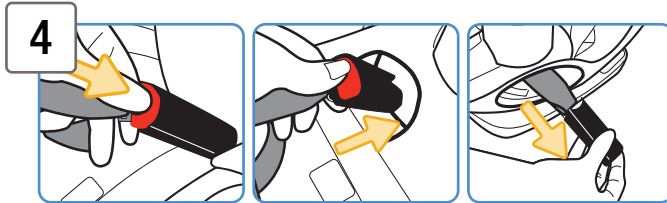


### Remove Connector with Adjuster from Storage

Press the red release button on the connector with the adjuster closest to it and pull it out of the opening.

Press the adjuster's button and pull the belt to loosen.

Then pull it through the **Rear-Facing Belt Path** opening on the left as shown.

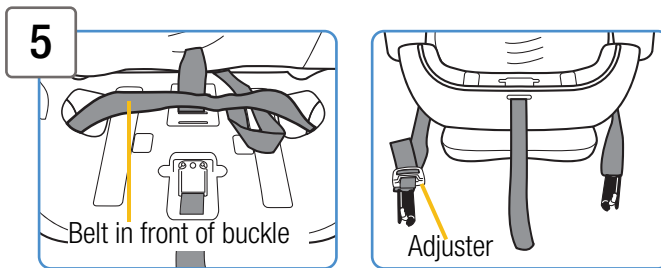


#### Remove Connector without Adjuster from Storage

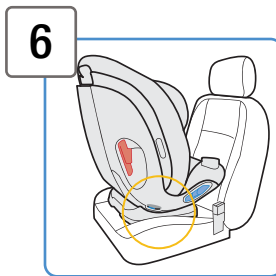
Press the red release button on the connector without the adjuster and pull it out of the opening.

Then pull it through the **Rear-Facing Belt Path** opening on the right as shown.

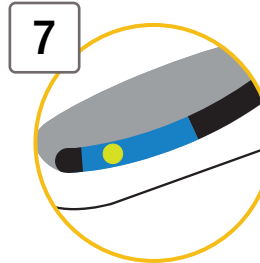
**Do not twist belt.**



#### Finished Lower Anchor Belt Routing



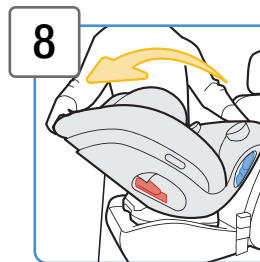
#### Place Car Seat Rear-Facing in Back Seat



#### Check the Rear-Facing Recline Angle Indicator

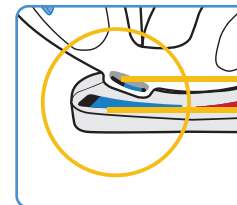
The angle indicator ball must be in the **blue zone** when used Rear-Facing.

Recline the car seat to achieve the proper angle, see step 8.

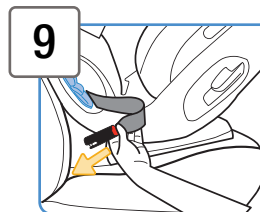


#### Recline the Car Seat

Squeeze the recline handle and rotate the car seat to any **blue position** that will put the angle indicator ball in the **blue zone**.

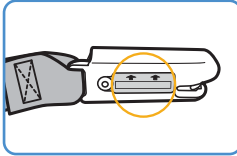


Rear-Facing Angle Indicator  
Rear-Facing Positions



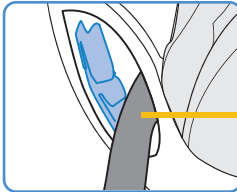
#### Attach Lower Anchor Connectors to Vehicle's Lower Anchors

Review your vehicle owner's manual for lower anchor locations and lower anchor belt use.



Make sure arrows on connectors are facing up.

Fasten one lower anchor belt connector to the anchor located in the vehicle seat bight.

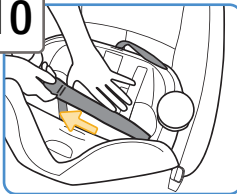


**Repeat for other side of child restraint.**

#### Lower Anchor Belt

Lays below the bottom notch as shown.

10

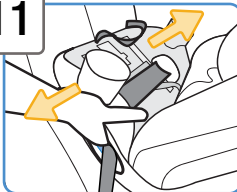


#### Tighten Belt

Place hand in child restraint.

Firmly push child restraint down and towards the vehicle seat back while pulling the free end of the belt parallel with the belt path through the belt path opening as shown.

11



#### Check Belt Tightness

Hold child restraint at the belt path with your weaker hand.

Push and pull from side to side.

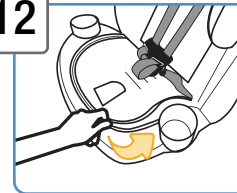
It should not move more than **1 in.** (2.5 cm).

**If it moves more than 1 in. (2.5 cm), you can try:**

- A. Pulling the belt tighter.
- B. Reinstalling the child restraint.
- C. Changing to a different seating location.
- D. Switching to vehicle belt installation.

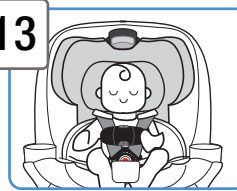


12



#### Zip Seat Pad and Attach Fastener

13

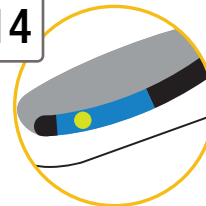


#### Secure Child in Car Seat

To properly secure your child in the car seat, see pages 53-55.

Check your child's fit often and make any needed adjustments to the car seat as they grow.

14



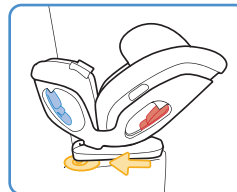
#### Recheck Rear-Facing Recline Angle Indicator

Make sure the angle indicator ball is in the **blue zone**.

**Redo the installation if not reclined correctly.**

**NOTE:** You may need to place a tightly rolled towel(s) or foam pool noodle(s) under the front of the base to help achieve the correct recline.

Check often to be sure padding is still in place and the belt is tight.



#### Finished!

Check the tightness of the install often to make sure it has not loosened.



**22-65 lb (10-29 kg) and 29-49 in. (74-125 cm)  
and at least 1 year old**



Lap/Shoulder  
Belt and Tether



Lap Belt  
and Tether



LATCH: Lower Anchor  
Belt and Tether

Do not install by this  
method for a child  
weighing more than  
40 lbs (18 kg).



Do not use the lower anchors of the child restraint anchorage system (LATCH system) to attach this child restraint when restraining a child weighing more than 40 lbs (18 kg).

The vehicle belt must be used for installation if your child weighs more than 40 lb (18 kg).

Do not use the lower anchor belt along with the vehicle lap or lap/shoulder belt.

Check the vehicle belt or the lower anchor belt before each use. Use only if the belt can be tightened properly and locked securely in place.

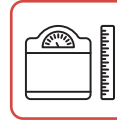
Do not fasten multiple lower anchor connectors on the same lower anchor bar in the vehicle.

In this child restraint your child **MUST** be at least 1 year old and weigh 22 lb (10 kg) before they sit forward-facing.

Failure to follow these warnings can result in serious injury or death.



Before you begin installing the seat into your vehicle, did you check:

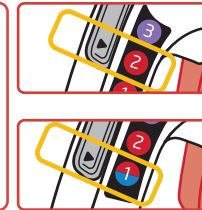


Your child's weight and height?  
See page 39.



Your child's fit? See page 9.

Do you need to make adjustments to the harness/headrest height or the buckle position?



When installing with the Lap/Shoulder Belt:  
Torso Position 1 or 2 can be used.  
You may adjust to **Position 2** as your child grows.

When installing with only the Lap Belt:  
You **must** use Torso **Position 1**.

1

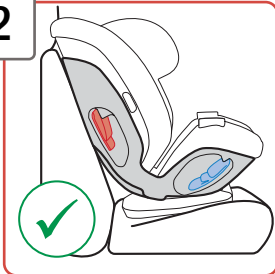


Place Car Seat  
Forward-Facing in  
Back Seat

*continued on next page*



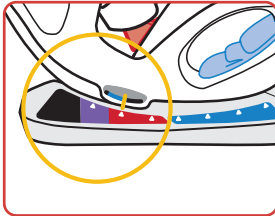
2



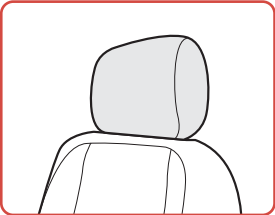
### Make Car Seat Flush Against Vehicle Seat

Use either of the **red positions** to make the car seat as flush against the vehicle seat back as possible.

Vehicle seat back must be upright.

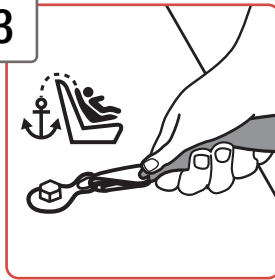


Do not refer to the Rear-Facing Angle Indicator. It does not apply to Forward-Facing mode.



**NOTE:** If your vehicle seat has a headrest that interferes with achieving a flush car seat fit, check your vehicle owner's manual to see if it can be removed, adjusted, or if there are other possible seating locations.

3

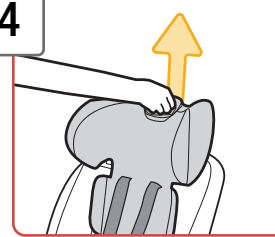


### Loosely Attach Tether Hook to Vehicle's Tether Anchor

Check your vehicle owner's manual for specific tether anchor locations.

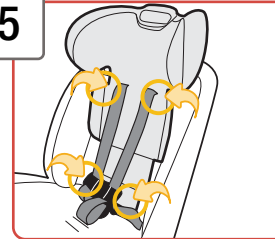


4



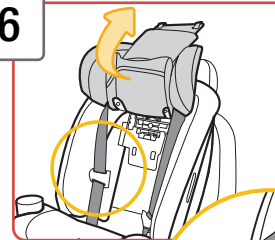
### Raise the Headrest All the Way Up

5



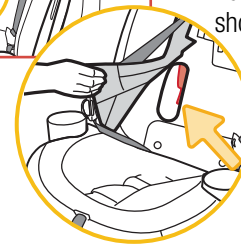
### Undo All of the Headrest Pad Fasteners

6

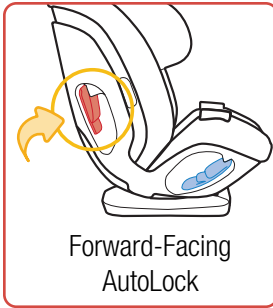


### Lift Up the Headrest Pad to Reveal the Forward-Facing Belt Path

Pull torso pad flap to side as shown.



*continued on next page*

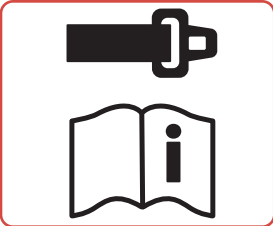


### IMPORTANT!

#### If you will be using the AutoLock:

Do not pull the vehicle belt all the way out to lock it before routing the belt.

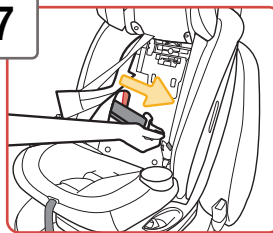
This will make threading the shoulder belt into the AutoLock easier.



#### If you will not be using the AutoLock:

Review pages 19-22 and your vehicle owner's manual to determine what kind of vehicle belt you have and how to lock a child restraint in place.

7



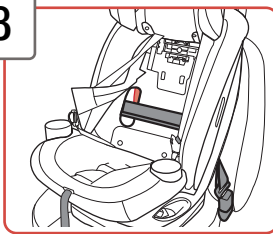
### Route the Vehicle Belt

Thread the vehicle belt into the **Forward-Facing Belt Path** opening.

Pull it across the seat. Then thread it through the other belt path opening as shown.

**Do not twist belt.**

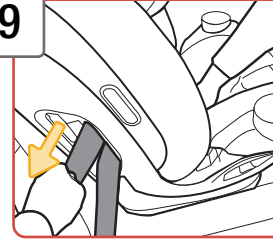
8



### Buckle the Vehicle Belt



9

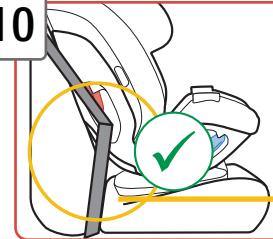


### Tighten Belt

Place hand in child restraint.

Firmly push child restraint down while pulling the shoulder belt or the free end of the lap belt parallel with the belt path through the belt path opening as shown.

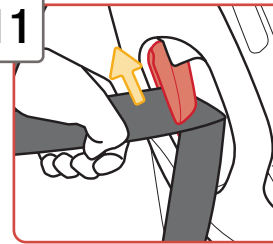
10



### Go to the Side of the Car Seat That Does Not Have the Vehicle Buckle

No Vehicle Buckle

11



### Locate AutoLock

Slide only the shoulder portion of the belt through the AutoLock as shown.

Pull it up until you cannot pull it any farther.

*continued on next page*



12



### Tighten Tether

Push firmly on the back of the seat and pull the tether strap to remove all slack and create tension on the strap.

13



### Check Belt Tightness

Hold child restraint at the belt path with your weaker hand.

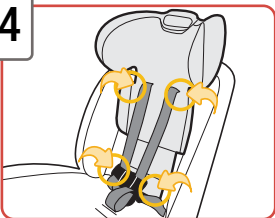
Push and pull from side to side.

It should not move more than **1 in.** (2.5 cm).

**If it moves more than 1 in. (2.5 cm), you can try:**

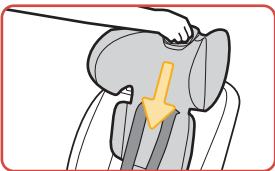
- A. Reinstalling the child restraint.
- B. Changing to a different seating location.
- C. Switching to lower anchor belt installation if lower anchors are available in your vehicle.

14



### Replace Headrest Pad

Fasten all the headrest pad fasteners.



Adjust the headrest/harness back to the correct position for your child. See page 9.



### Finished!

When used correctly, the AutoLock will lock the vehicle belt in place.

After the seat has been installed, if your car has a switchable retractor, you may also use it to lock the belt.

Review pages 19-22 and your vehicle owner's manual to determine how to lock the belt with the retractor.

Check the tightness of the install often to make sure it has not loosened.



### Securing Child in Car Seat

To properly secure your child in the car seat, see pages 53-55.

Check your child's fit often and make any needed adjustments to the car seat as they grow.



## Forward-Facing LATCH: Lower Anchor + Tether Install

Do not use the lower anchors of the child restraint anchorage system (LATCH system) to attach this child restraint when restraining a child weighing more than 40 lbs (18 kg).

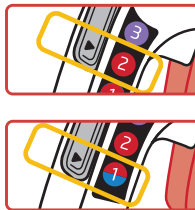
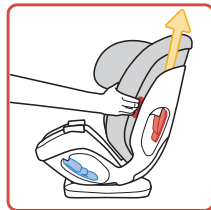
Before you begin installing the seat into your vehicle, did you check:



Your child's weight and height?  
See page 39.

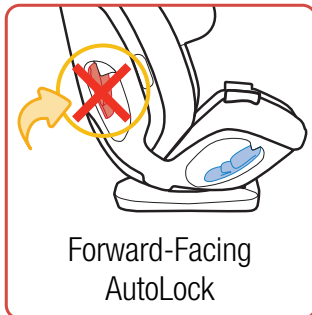


Your child's fit? See page 9.  
Do you need to make adjustments to the harness/headrest height or the buckle position?



### Torso Position 1 or 2 Can Be Used

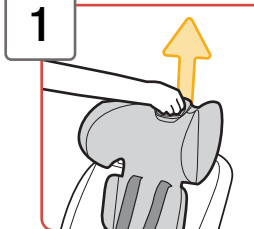
You may adjust to **Position 2** as your child grows.



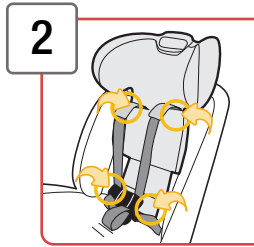
Forward-Facing AutoLock

### IMPORTANT!

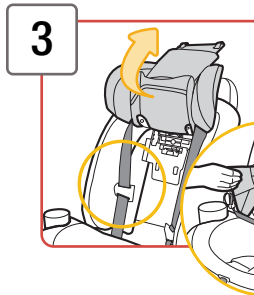
Do not use the AutoLock feature when installing with lower anchor belts.



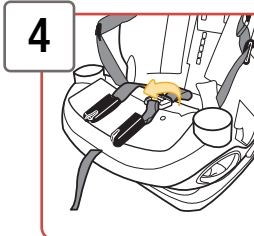
**1** Raise the Headrest All the Way Up



**2** Undo All of the Headrest Pad Fasteners



**3** Lift Up the Headrest Pad to Reveal the Forward-Facing Belt Path



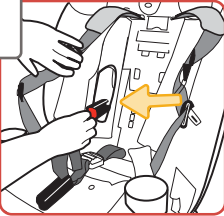
**4** From the Back of the Seat, Flip the Seat Pad Forward to Reveal Lower Anchor Belt

Remove belt and connectors from the storage location or if belt was used rear-facing, remove from the Rear-Facing Belt Path.

*continued on next page*

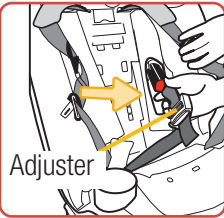


5



### Thread Connectors Through the Forward-Facing Belt Path As Shown

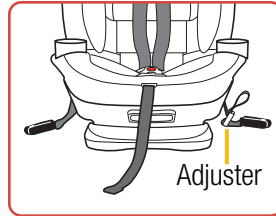
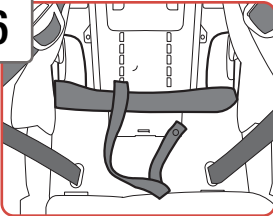
Thread the connector without the adjuster through the **Forward-Facing Belt Path** opening on the left as shown.



Thread the connector with the adjuster closest to it through the **Forward-Facing Belt Path** opening on the right as shown.

**Do not twist belt.**

6



### Finished Lower Anchor Belt Routing

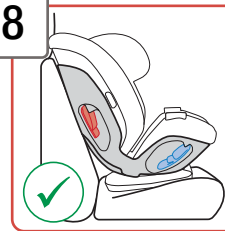
7



### Place Car Seat Forward-Facing in Back Seat



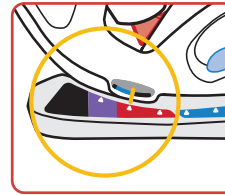
8



### Make Car Seat Flush Against Vehicle Seat

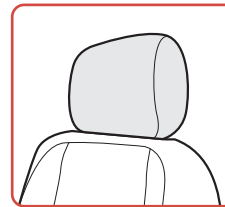
Use either of the **red positions** to make the car seat as flush against the vehicle seat back as possible.

Vehicle seat back must be upright.



**Do not refer to the Rear-Facing Angle Indicator.**

**It does not apply to Forward-Facing mode.**



**NOTE: If your vehicle seat has a headrest that interferes with achieving a flush car seat fit,** check your vehicle owner's manual to see if it can be removed, adjusted, or if there are other possible seating locations.

9



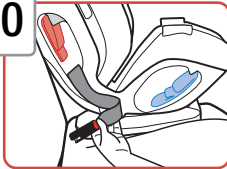
### Loosely Attach Tether Hook to Vehicle's Tether Anchor

Check your vehicle owner's manual for specific tether anchor locations.

*continued on next page*

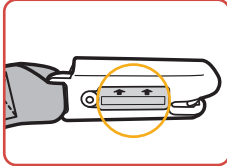


10



### Attach Lower Anchor Connector to Vehicle's Lower Anchor

Review your vehicle owner's manual for lower anchor locations and lower anchor belt use.



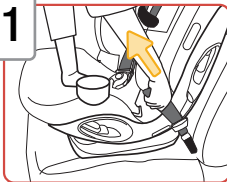
Make sure arrows on connectors are facing up.



Fasten one lower anchor belt connector to the anchor located in the vehicle seat bight.

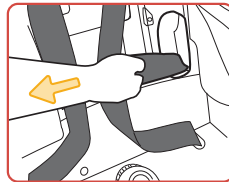
Repeat for other side of child restraint.

11



### Tighten Belt

Place hand in child restraint. Firmly push child restraint down while pulling the free end of the belt parallel with the belt path through the belt path opening as shown.



12

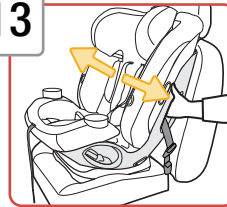


### Tighten Tether

Push firmly on the back of the seat and pull the tether strap to remove all slack and create tension on the strap.



13



### Check Belt Tightness

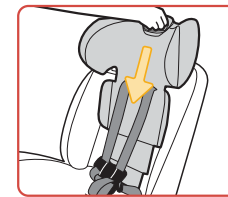
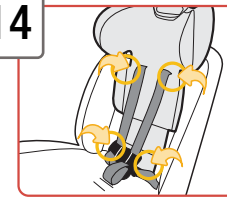
Hold child restraint at the belt path with your weaker hand.

Push and pull from side to side. It should not move more than **1 in.** (2.5 cm).

If it moves more than 1 in. 2.5 cm, you can try:

- A. Putting your knee in the car seat and pulling the belt tighter.
- B. Reinstalling the child restraint.
- C. Changing to a different seating location.
- D. Switching to vehicle belt installation.

14



### Replace Headrest Pad

Fasten all the headrest pad fasteners. Adjust the headrest/harness back to the correct position for your child. See page 9.



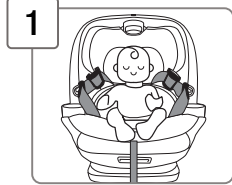
## Finished!

Check the tightness of the install often to make sure it has not loosened.



### Securing Child in Car Seat

To properly secure your child in the car seat, see pages 53-55. Check your child's fit often and make any needed adjustments to the car seat as they grow.

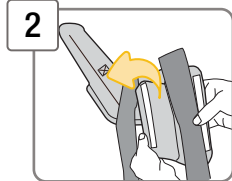


1

### Place Child in Car Seat

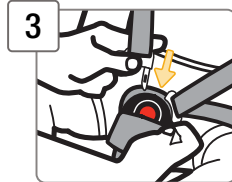
The child's bottom and back should be flat against the car seat.

Position harness straps over your child's shoulders and upper thighs.



2

### Unfasten Harness Covers

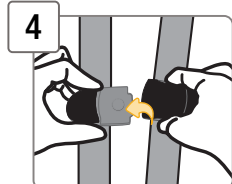


3

### Buckle Harness

Push buckle tongues into buckle until you hear them "click."

Pull up on harness straps to make sure buckle is locked.

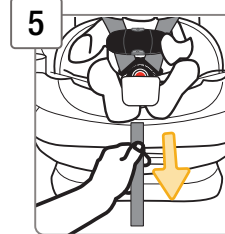
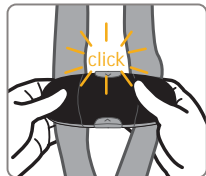


4

### Close Chest Clip

Lay the right (top) half of the chest clip over the left (bottom) half and it will automatically snap together and lock.

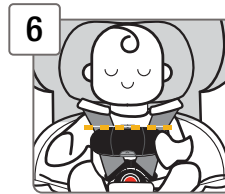
Pull gently on each half of the chest clip together to make sure it is locked.



5

### Tighten Harness

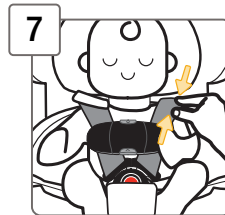
Pull on harness adjustment strap to snugly tighten the harness.



6

### Position Chest Clip

Slide chest clip up the harness straps and position it at mid-chest (even with armpits) and away from the child's neck.



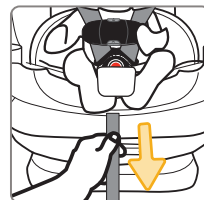
7

### Check Harness Tightness

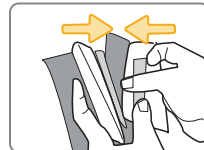
Try to pinch the harness at the shoulders and hips vertically between index finger and thumb as shown.

**If your fingers slip off,** the harness is tight enough.

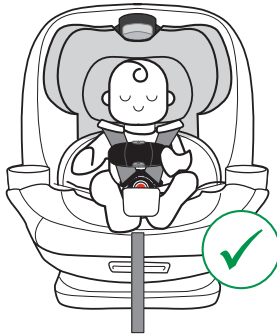
**If you can pinch the harness strap,** tighten more.



A snug strap should not allow any slack. It lies in a relatively straight line without sagging. It does not press on the child's flesh or push the child's body into an unnatural position.



Refasten harness covers.



## Finished!

The child is now secured in the car seat.

Check your child's fit often and make any needed adjustments to the car seat as they grow.

### To Remove Child From Car Seat:

1. Loosen Harness Strap
2. Unbuckle Harness
3. Release Chest Clip
4. Remove Child



Failure to fasten and tighten the harness system correctly may allow the child to be ejected from the child restraint in a crash or sudden stop causing serious injury or death.



Do not mistake comfort for safety. Harness system must be snugly adjusted.

Do not put snowsuits or bulky garments on your child when placing them in the child restraint. Bulky clothing can prevent the harness straps from being tightened properly.



40-120 lb (18-54 kg) and 43-57 in. (110-145 cm)



Lap/Shoulder Belt



Keep booster seat belted when not in use.



Do not use the harness system when using as a booster seat.



Use only the vehicle's lap and shoulder belt system when restraining the child in this booster seat. Do not use only the lap belt when using this seat as a booster seat.

The shoulder belt must always be adjusted snugly across the child's chest. NEVER place shoulder belt under the child's arms or behind their back.

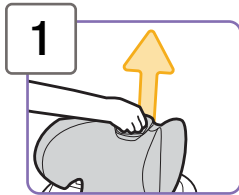
Do not use this booster seat if the tops of your child's ears are above the top of the booster seat's headrest.

Do not use the LATCH when using as a booster seat. Secure lower anchor belt and tether strap to their storage locations.

Failure to follow these warnings can result in serious injury or death.

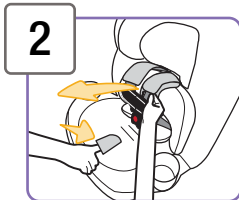
## Removing Easy-Out Harness Covers and Storing Harness System

You must store the harness system when using the Booster Seat mode. To remove accessories, see pages 3-4.



1

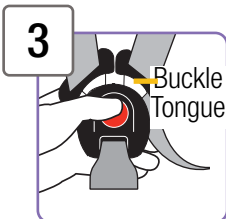
**Raise the Headrest All the Way Up**



2

**Fully Loosen Harness Straps**

Place your hand between the harness cover and harness strap. You may need to undo the harness cover or move the chest clip down. Push down on harness release lever (through opening in pad) while pulling out on harness straps as shown.

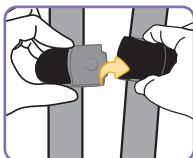
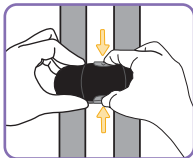


3

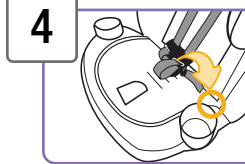
**Unbuckle Harness and Release Chest Clip**

Press in towards the top of the red button to release the buckle tongues.

Hold the chest clip with both hands and press in on the top and bottom buttons with your index finger and thumb as shown.



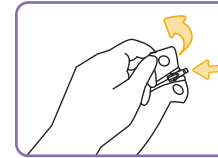
While holding the buttons in, pull the right (top) half of the clip apart from the left (bottom) half to release the magnet and separate the chest clip.



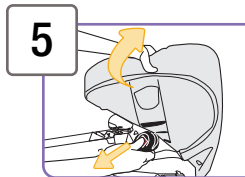
4

**Locate EZ Zipper on Seat Pad As Shown**

Undo the fastener to expose the zipper.



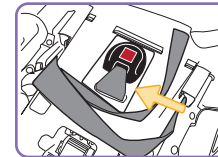
Unzip the seat pad.



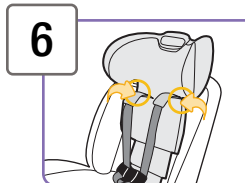
5

**Lift Up Seat Pad Panel**

Pull the buckle down through the pad and lay it flat in the storage location as shown.

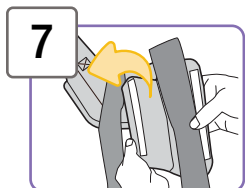


Zip the seat pad when done.



6

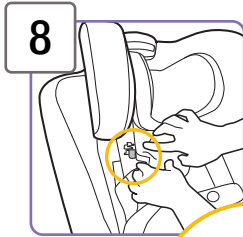
**Undo the Headrest Pad Fasteners As Shown**



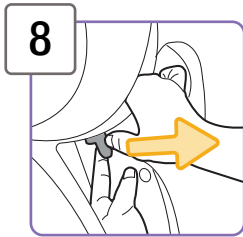
7

**Undo Fastening Strip on Harness Cover and Remove Harness Strap As Shown**  
Repeat for other side.

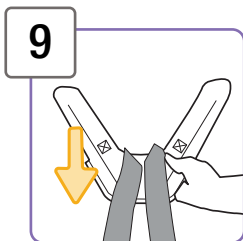
*continued on next page*



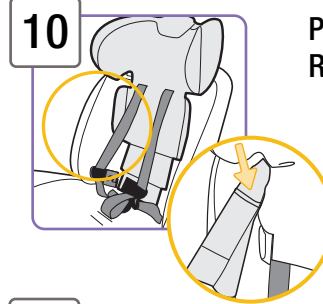
**8** Locate the Light Gray Harness Cover Clip Behind Harness Cover and Headrest Pad



**8** Place Your Index Finger Behind the Clip's Tab and Lift Up while Pulling It Out of the Slot  
Repeat for other side.



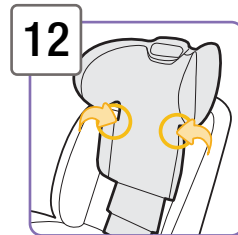
**9** Slide the Harness Covers Out from Behind the Harness Straps As Shown



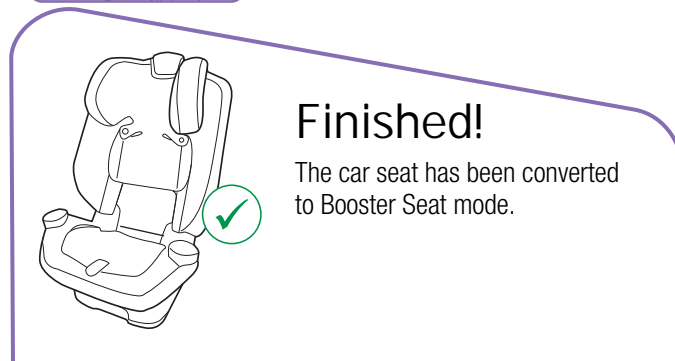
**10** Pull Torso Pad Flap to Side to Reveal Storage Pocket



**11** Lift Up Chest Clip Piece and Buckle Tongue and Place in Storage Pocket  
Push the pieces all the way down into the pocket.  
Repeat for other side.  
Make sure the pieces lay flat inside the pocket.

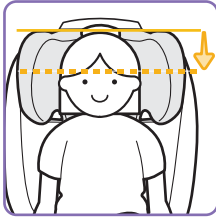


**12** Replace the Headrest Pad Fasteners



**Finished!**

The car seat has been converted to Booster Seat mode.



### Head Position

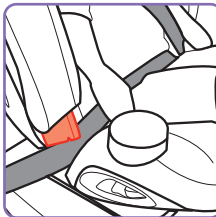
Tops of the child's ears should never be above the top of the headrest.

Adjust headrest if needed, see page 10.



### Shoulder Belt Position

The shoulder belt should lay snugly across the center of the child's shoulder and across the chest and not on their face or neck.



### Lap Belt Position

The lap belt should lay snugly across the child's hips and not on their stomach.



You must store the harness system when using the Booster Seat mode. See pages 57-60.

1

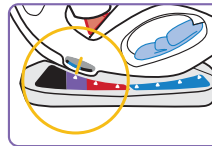


Raise the Adjustable Torso to Position 3

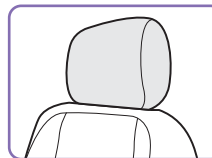
2



Place Booster Seat Forward-Facing in Back Seat



You **must** use the fully upright **purple** position.



**NOTE:** If your vehicle seat has a headrest that interferes with achieving a flush car seat fit, check your vehicle owner's manual to see if it can be removed, adjusted, or if there are other possible seating locations.

3

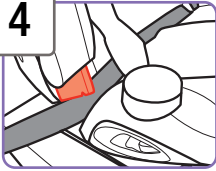


Have Child Sit in Booster Seat

*continued on next page*



4

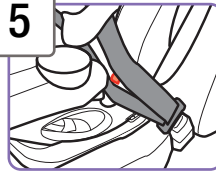


### Position Lap Belt on Child

Route the lap belt portion of the vehicle belt through the booster belt path as shown.

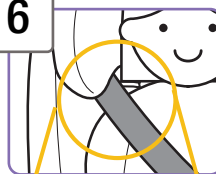
The lap belt should lay snugly across the child's hips and not on their stomach.

5



### Buckle the Vehicle Belt

6

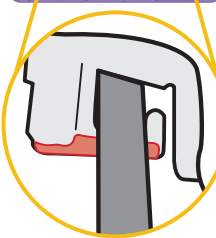


### Position Shoulder Belt on Child

Pull up on shoulder belt to tighten.

The shoulder belt should lay snugly across the center of the child's shoulder and across the chest and not on their face or neck.

Only use the shoulder belt-positioning guide in the headrest if necessary to help position the shoulder belt correctly.



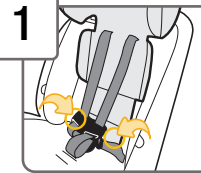
## Finished!

Check periodically to make sure your child has not moved out of position and loosened the shoulder belt.

To remove accessories, see pages 3-4 and 57-60.

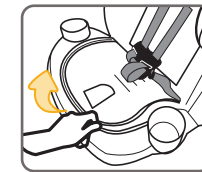
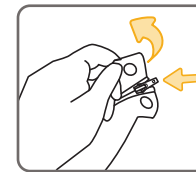
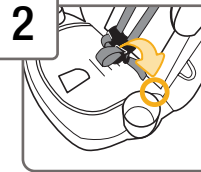
### Removing Seat Pad

1



### Undo Pad Fasteners That Connect Headrest Pad and Seat Pad

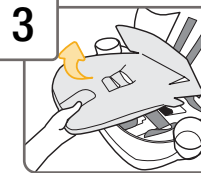
2



### Locate EZ Zipper on Seat Pad As Shown

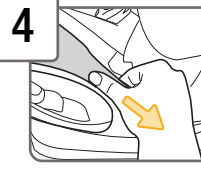
Undo the fastener to expose the zipper. Unzip the seat pad.

3



### Remove Seat Pad Panel from Seat

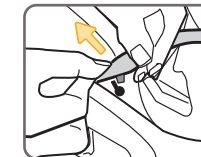
4



### Undo Seat Pad Tabs

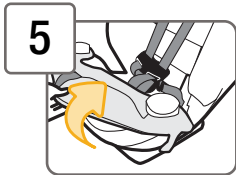
On the sides of the car seat above the **Rear-Facing Belt Path**, there are tabs that keep the seat pad in place.

Place your thumb over the tab and pull it down to release it from the keyhole in the car seat.



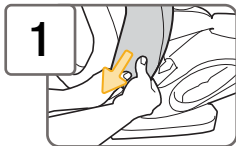
**Repeat for other side.**

*continued on next page*



### Remove Seat Pad from Seat

#### Removing Torso Pad



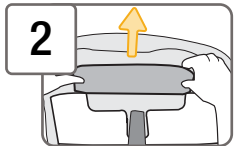
#### Undo Torso Pad Tabs

On the sides of the car seat, there are tabs that keep the torso pad in place.

Place your thumb over the tab and pull it down to release it from the keyhole in the car seat.



Repeat for other side.

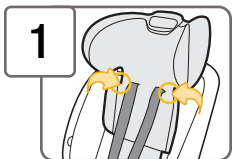


From Back of Seat, Remove the Torso Pad Flap That is Tucked into the Shell



Remove Torso Pad from Car Seat

#### Removing Headrest Pad



#### Undo Fasteners on Headrest Pad

Gently pull the headrest pad off of the headrest. Make sure headrest airbags stay in place.

## Cleaning Parts of Car Seat and Installing Seat Pad Set

### Cleaning Seat Pad Set, Harness Covers, Buckle Cover, Head & Back Pillows, Infant Positioning Pillow

Machine wash separately with cold water on a gentle cycle. Make sure harness covers are closed so fastening strips are not exposed. Do not use bleach. Tumble dry separately for 10-12 minutes on low heat. Remove immediately.

#### Cleaning Harness Strap

**Check the harness straps often for any wear or damage.** Spot clean using warm sudsy water and damp cloth. Spilled food and liquids on the car seat may result in mold or bacterial growth over time. These spills could also attract insects or rodents.

#### Cleaning Buckle and Shell

Spot clean using warm sudsy water and damp cloth. Do not submerge into water.

**⚠ Do not use the child restraint without the seat pad or with damaged harness straps.**

### Installing Car Seat Pad Set

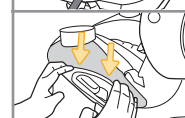


#### Seat Pad

Slip seat pad on to bottom of car seat.



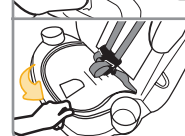
Pull harness adjustment strap through pad.



Tuck seat pad along the sides and bottom of the car seat.

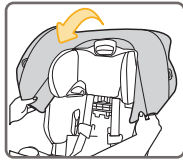


On both sides of the seat, push pad tabs into keyholes in shell and pull up to snap tab into place.



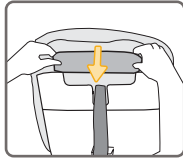
Place seat pad panel in seat. Pull the buckle through pad. Zip seat pad panel.

*continued on next page*

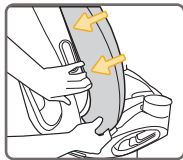


### Torso Pad

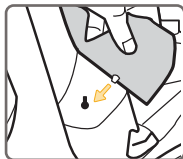
Wrap torso pad around the top of shell.



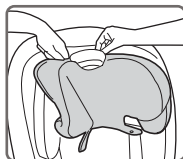
From the back of the seat, tuck torso pad flap into the shell.



Tuck pad in along the sides of shell.

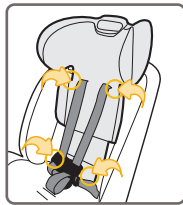


On both sides of the seat, push pad tabs into keyholes in shell and pull up to snap tab into place.



### Headrest Pad

Adjust the headrest to the highest position.

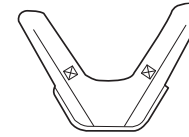


Starting from the top of the headrest, gently pull headrest pad onto headrest.

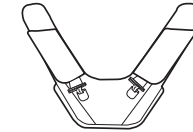
Make sure headrest airbags stay in place.

Slide harness straps into slots in pad.

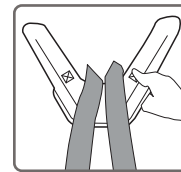
Attach all of the headrest pad fasteners.



Front View

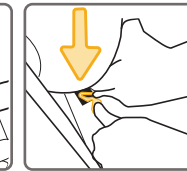
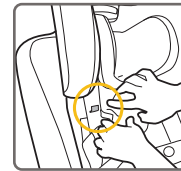


Back View



With the front of the harness cover facing you, slide it behind the harness straps as shown.

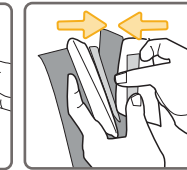
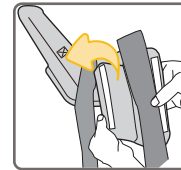
The harness cover should form a “V” when installed correctly as shown.



Undo headrest pad fasteners. Lift up headrest pad to locate harness clip slot in shell.

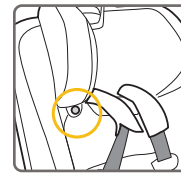
Using your thumb, push clip into slot until you hear a “click”.

**Repeat for other side.**



Fold down harness cover and undo fastener. Place harness strap in harness cover as shown. Close fastener.

**Repeat for other side.**



Attach headrest pad fasteners.



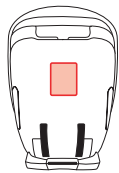
This restraint is certified for aircraft use when used with the internal harness.

This child restraint is not certified for aircraft use when used as a booster seat because aircraft seats do not have shoulder belts.

Install the child restraint in a window seat to avoid blocking the aisle. If the aircraft lap belt is too short, ask the flight attendant for a belt extender.

Use only on forward-facing aircraft seats.

Contact the airline for their specific policies.



Some airlines may ask to see a label stating that this child restraint is certified for aircraft use.

There is an airplane certification label located on the back of this child restraint as shown.

**⚠️ Store lower anchor belt and tether strap. Do not use the AutoLock when using the aircraft belts.**



#### Rear-Facing Aircraft Installation

Follow the steps on pages 26-32; skipping the AutoLock steps.



#### Forward-Facing Aircraft Installation

Follow the steps on pages 40-46; skipping the tether strap and AutoLock steps.



### Do not risk your child's safety.

To keep your child as safe as possible, Dorel Juvenile Group strongly recommends replacing the car seat even after a minor crash; even if it was not occupied at the time.

#### Replacement After a Minor Crash

The National Highway Traffic Safety Administration states that for a crash to be considered minor **ALL of the following must be true:**

- Vehicle able to drive away from the crash site; **AND**
- Vehicle door nearest the car seat was not damaged; **AND**
- No passengers were injured; **AND**
- Airbags did not deploy; **AND**
- There is no visible damage to the car seat.

If the crash your car seat was involved in meets **ALL** the criteria, you may not need to replace the car seat.

If one or more of these criteria are not true or if you are uncertain of any of your answers, replace the car seat immediately.

#### Replacement After a Moderate to Severe Crash

You **must** replace this car seat if it has been in a moderate to severe car crash.

This car seat is intended to protect a child in a single crash. During a crash, the car seat and all of its parts absorb crash energy which can deform or weaken it. Damage is not always visible. A damaged car seat must be replaced immediately.

#### Expiration



On the side of the child restraint there is a date of manufacture label as shown.

Do not use this child restraint more than 12 years after the date of manufacture.



### Child Restraint Use

Never take your child out of the child restraint while the vehicle is moving.

Never leave child unattended. Placing your child in a hot child restraint may result in burns.

Do not use a child restraint with damaged or missing parts.

Do not use a child restraint with cut, frayed or damaged harnesses.

Do not substitute parts or try to modify the child restraint in any way. Do not lubricate buckles and fasteners.

Do not use any child restraint accessory except those approved by Dorel Juvenile Group.

Never allow any child to play with this child restraint; it is not a toy.

Do not remove or cover up any of the warning labels or other labels on the child restraint.

This child restraint has been certified for use in passenger vehicles. Do not use in a boat, on a motorcycle or in a cargo van or bus where there are no seat belts or tether anchors.

Read all instructions for additional warnings.

### Installation in Vehicle

Check the vehicle belt or lower anchor belt before each use. Use only if the belt is tightened properly and locked securely in place.

This child restraint should be securely belted in the vehicle even when not in use. In a crash or sudden stop, an unsecured child restraint could injure occupants.



### Vehicle Seating Position



Never place a child rear-facing in a seating position with an active frontal air bag.

Check the vehicle owner's manual for more information about air bag/child restraint use.



Use the child restraint only on vehicle seats that face forward.



Do not use on seats that face the sides or rear of the vehicle.

For vehicles without a back seat, refer to your vehicle owner's manual.



Children are safer when properly restrained in rear seating positions than in the front seating positions.

According to accident statistics, children in rear seating positions are statistically safer, whether you have air bags, advanced air bags, or no air bags at all.

**If you are not sure where to place the child restraint in your vehicle:** consult your vehicle owner's manual; contact Dorel Juvenile Group Consumer Care Department; or visit your local Child Passenger Inspection Station: Go to <http://www.safercar.gov/cpsApp/cps/index.htm> to find your closest station.

**To avoid your child being seriously burned, take the following precautions:**

1. Park in the shade or where sun does not directly hit the child restraint.
2. Cover the child restraint with a sheet or blanket when not in use.
3. Check for hot seat and buckles before placing child in child restraint.

To help protect your vehicle seat's upholstery from damage, use a single layer towel underneath and behind child restraint.



Please complete the postage-paid registration card that came with your child restraint, and send it to us. Child restraints could be recalled for safety reasons. You must register this restraint to be reached in a recall. Send your name, address, e-mail address if available and the restraint's model number and manufacturing date to:

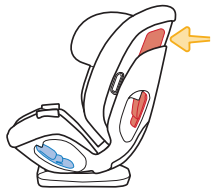
**Dorel Juvenile Group**  
2525 State Street  
Columbus, IN 47201

or call 1-800-951-4113 or register online at [www.djgusa.com/registration/carseat/us](http://www.djgusa.com/registration/carseat/us).

For recall information, call the U.S. Government's Vehicle Safety Hotline at 1-888-327-4236 (TTY: 1-800-424-9153), or go to <http://www.NHTSA.gov>.

Your Name		
Your Street Address		
City	State	Zip Code
Email Address (optional)		
Model Number	Model Name	Manufacture Date
AB123CDE	Maxi-Cosi Car Seat	05/16/2015
L#11 B265035		

Example of model number, manufacture date, and line code.



If you don't have the card or if your address changes, you will find the model number, manufacture date, and line code on the label located on side of shell.

Dorel Juvenile Group, Inc. (DJG) warrants this product to the original retail purchaser as follows: This product is warranted against defective materials or workmanship for one year from the date of original purchase. **An original receipt is required to validate your warranty.** DJG will, at its option, provide replacement parts or replace this product. DJG reserves the right to substitute if the part or model has been discontinued.

To make a claim under this warranty contact our Consumer Care Department by phone at 1-800-951-4113; or text us at 1-812-652-2525. Our hours of operation are from 8:00 a.m. to 6:00 p.m. EST Monday through Thursday and from 8:00 a.m. to 4:30 p.m. on Friday.

**Proof of purchase is required and shipping charges are the responsibility of the consumer. Warranty Limitations:** This warranty does not include damages which arise from misuse or abuse of this product.

**Limitation of Damages:** The warranty and remedies as set forth are exclusive and in lieu of all others, oral or written, expressed or implied. In no event will DJG or the dealer selling this product be liable to you for any damages, including incidental or consequential damages, arising out of the use or inability to use this product. **Limitation of warranties and other warranty terms and state law rights:** Any implied warranties, including implied warranties of the merchantability and fitness for a particular purpose, shall be limited to the duration and terms of the express written warranty. Some states do not allow limitations as to how long an implied warranty lasts or the exclusion or limitation of incidental or consequential damages, so the above limitations may not apply to you.

This warranty gives you specific legal rights, and you may have other rights, which vary from state to state. Neither DJG nor the dealer selling this product authorized any person to create for it any other warranty, obligation, or liability in connection with this product.

*continued on next page*

**Please note:** Our product warranty only applies when purchased from an authorized Maxi-Cosi retailer. The origin of products not purchased through these authorized retailers is unknown and could be counterfeit.

We cannot support products from an unknown origin as we cannot verify the handling or condition of such merchandise. We maintain a strong network of authorized retailers to ensure you are purchasing safe and complete products.

Fulfillment by a third party does not guarantee you are purchasing from one of these authorized retailers. Pricing which is inconsistent with the majority of retailers is a strong indication that the retailer is not authorized, as we have a consistent price offering across all authorized retailers.

If you are unsure of the authorization status of a retailer you are considering purchasing from, or have purchased from, you can check [www.maxi-cosi.com/us-en/shops.aspx](http://www.maxi-cosi.com/us-en/shops.aspx); or call our Consumer Care department at 1-800-951-4113; or text us at 1-812-652-2525.

**1. If the child restraint buckle or harness release lever sticks or you cannot get the straps tight enough around child:**

**DO NOT LUBRICATE.** Check around lever and retractor for dropped food, sticky spilled drinks, dirt, leaves, etc. Clean with warm water and/or remove object with tweezers. If you cannot get the harness to adjust and remain tight with the buckle securely locked, do not use the child restraint.

**2. If your harness twists:**

Straighten the harness each time you put your child in the child restraint to help prevent twisting. Lock the buckle and tighten harness so it will be ready for next use.

Buckle Assembly	Lower Anchor Belt
Seat Pad Set	Instructions
Cup Holder (1)	

**If requested color is not available,  
similar color will be substituted.**

**Prices are subject to change.**

**Applicable tax and shipping &  
handling will also be added.**

**For parts availability and questions,**

**Call:** 1-800-951-4113

**Text:** 1-812-652-2525

**Chat:** [www.maxi-cosi.com](http://www.maxi-cosi.com)

**If you already know which parts you need,**  
you may complete your order with a credit card  
by calling us at 1-800-951-4113.

**We accept Visa or MasterCard.**

**Hours of Operation:**

M-TH from 8:00 AM to 6:00 PM EST  
FRI from 8:00 AM to 4:30 PM EST

Thank you for choosing this child restraint. The DJG family is committed to creating child restraints with the most comfort and convenience available today.

Remember, parents are a child's first teachers and examples. If you always buckle your seat belt, your child will think it is the natural thing to do. Make it a firm rule that the vehicle does not go until everyone is buckled up. Make no exceptions.

No one can predict if use of a child restraint will prevent injury or death in a particular crash. However, when combined with careful driving, proper use of a child restraint can lower a child's risk of injury or death in most crashes.

If you still have questions or have any concerns with this child restraint, please contact our Consumer Care Department:

**Call:** 1-800-951-4113

**Text:** 1-812-652-2525

**Website:** [www.maxi-cosi.com](http://www.maxi-cosi.com)

**Hours of Operation:**

M-TH from 8:00 AM to 6:00 PM EST  
FRI from 8:00 AM to 4:30 PM EST